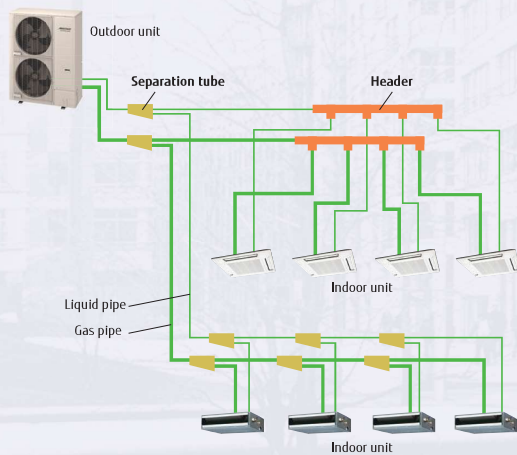


Heat Pump for Small Capacity Type

AIRSTAGE™ J-IVL

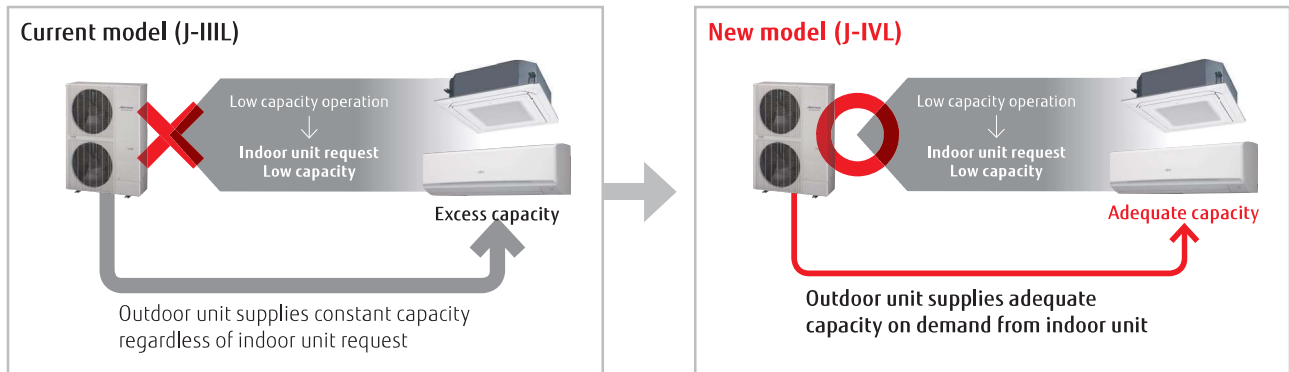
System configuration example

- This system is used for small and medium-sized buildings. 1 refrigerant system is used for each outdoor unit.
- Connection of multiple indoor units using separation tubes and headers.



New intelligent refrigerant control

Fujitsu general proposes New outdoor unit which includes New refrigerant control. New refrigerant control can be operated with suitable control corresponding to heat load of the room and can offer a more comfortable space. New refrigerant control can also provide more energy savings.



High Static Pressure

External static pressure is available up to 60Pa for 14/16/18HP. (30Pa for 8/10HP, 40Pa for 12HP)

* Capacities are slightly decreased for rated values during high static pressure operation.



Advanced high efficiency technology

- Ø570 mm Large propeller fan**
 The high efficiency and the low sound operation are mutually realized by reduction of a draft loss which are enabled by the Fujitsu General's original blade design and a large diameter propeller fan.
- DC fan motor**
 Miniaturized, low noise, high efficiency, multi-stage DC fan motor is mounted.
- Large heat exchanger**
 Heat exchange performance is substantially improved by mounting of 2.6-row large heat exchanger.
- DC inverter control**
 Efficiency is improved by mounting of new active filter module.
- Subcool heat exchanger**
 Cooling performance is improved by mounting of dual tube heat exchanger.
- Scroll compressor**
 The equipment of scroll compressor with a wide range of rotational frequency from 15 to 130 rps together with Fujitsu General's unique sensorless sine wave control method which smoothly control the input power run into the motor realized a mutual improvement on the energy efficient operation and the low sound operation.

15-130 rps



Fujitsu General provides perfect total air conditioning systems that take into account energy saving, low noise, comfortable airflow, small room application and centralized control for small-sized office buildings with many small rooms.

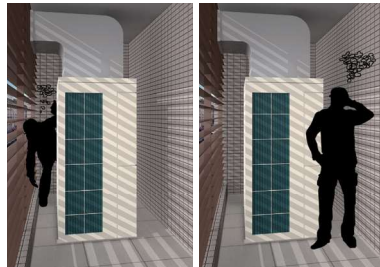
AIRSTAGE™ J-IVL

Image: 8/10/12 HP models

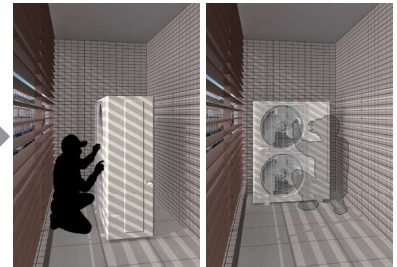
Slim & Compact Design



Various Installation



AIRSTAGE™ V Series outdoor unit



AIRSTAGE™ J Series outdoor unit

In house installation

Low noise in consideration for the nearby residents

This model is front air discharge type and about 1000 mm wide, so flexible installation is possible even at narrow in house space.



AIRSTAGE™ V Series outdoor unit



AIRSTAGE™ J Series outdoor unit

Narrow space behind building

Space saving

Due to compact and thin model, direct ground installation or wall mounted installation is possible even at narrow off-street.



AIRSTAGE™ V Series outdoor unit



AIRSTAGE™ J Series outdoor unit

Installation at back street of building

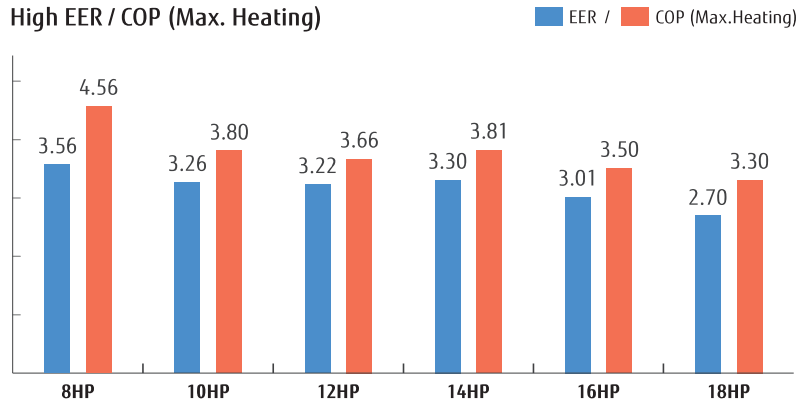
Flexible installation

This model is front air discharge type and slim & low body, so installation space is compact. Building windows are not blocked and space saving multiple units installation is possible.

Efficiency in actual operation

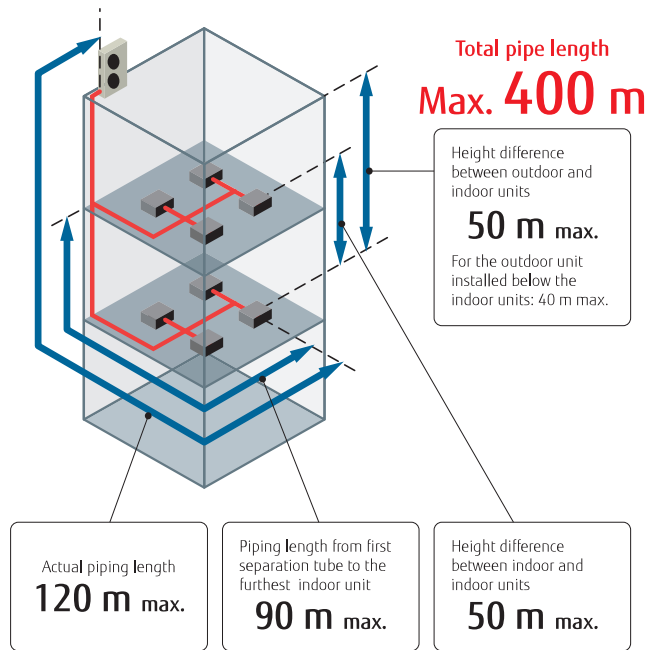
Top class high EER/COP(Max. Heating) is achieved for all models by large heat exchanger, high efficient Scroll compressor, and our own technologies.

High EER / COP (Max. Heating)



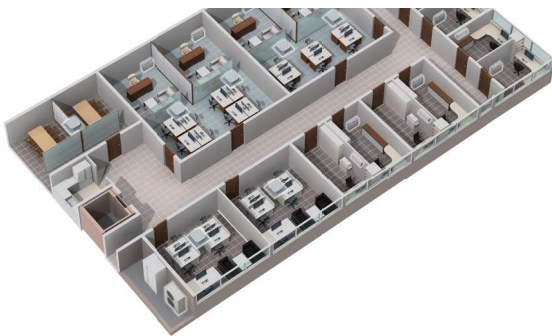
Long piping length

Our advanced refrigerant control technology allows us to achieve a total refrigerant piping length of 400 m. This opens up new possibilities in system design.



Up to 42 units* can be connected

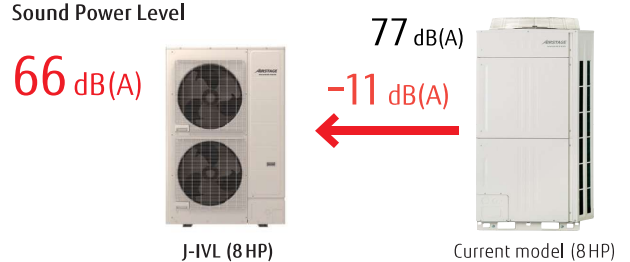
The combination of the smallest but adequate capacity indoor unit and a new outdoor unit with the optimum heat exchanger structure has realized the industry's top class connection of 42 units. *: 18 HP model



Top Class Low Operating Sound

Top class low operating sound is achieved. Highly suited for densely populated areas thanks to their low operating sound.

Sound Power Level



8,10,12 HP: AJY072LELBH / AJY090LELBH / AJY108LELBH
 14,16,18 HP: AJY126LELBH / AJY144LELBH / AJY162LELBH



Specifications

Rating Capacity range		HP	8	10	12	14	16	18
Model name			AJY072LELBH	AJY090LELBH	AJY108LELBH	AJY126LELBH	AJY144LELBH	AJY162LELBH
Maximum Connectable Indoor Unit			1-20	1-25	1-30	1-36	1-40	1-42
Power source			3 phase, ~400V, 50Hz					
Capacity	Cooling	kW	22.4	28.0	33.5	40.0	45.0	50.0
	Nominal Heating		22.4	28.0	33.5	40.0	45.0	50.0
	Max Heating		25.0	31.5	37.5	45.0	50.0	55.0
Input power	Cooling	kW	6.30	8.59	10.42	12.12	14.96	18.52
	Nominal Heating		4.65	6.61	8.18	9.71	11.81	13.66
	Max Heating		5.45	8.29	10.25	11.80	14.29	16.66
EER	Cooling		3.56	3.26	3.22	3.30	3.01	2.70
COP	Nominal Heating	W/W	4.82	4.24	4.10	4.12	3.81	3.66
	Max Heating		4.56	3.80	3.66	3.81	3.50	3.30
Airflow rate		m ³ /h	8,400	9,000	11,000/12,100	13,000	14,000	14,800/15,300
Sound pressure level / Power level	Cooling	dB(A)	52/66	54/69	59/73	62/75	64/77	65/79
	Heating		54/—	57/—	62/—	63/—	65/—	68/—
Net Dimensions	Height	mm	1,428	1,428	1,428	1,638	1,638	1,638
	Width		1,080	1,080	1,080	1,080	1,080	1,080
	Depth		480	480	480	480	480	480
Weight		kg	170	177	178	213	213	217
Refrigerant	Type (Global Warming Potential)		R410A (2,088)	R410A (2,088)	R410A (2,088)	R410A (2,088)	R410A (2,088)	R410A (2,088)
	Charge	kg(CO ₂ eq-T)	7.0 (14.6)	7.5 (15.7)	7.5 (15.7)	11.0 (22.9)	11.0 (22.9)	11.8 (24.6)
Connection pipe diameter	Liquid	mm	9.52	9.52	12.70	12.70	12.70	12.70
	Gas		19.05	22.20	28.58	28.58	28.58	28.58
Total pipe length		m	400	400	400	400	400	400
Max. height difference			50/40 (Outdoor unit: Upper/Lower)					
Operation range	Cooling	°C	-15 to 46	-15 to 46	-15 to 46	-5 to 46*	-5 to 46*	-5 to 46*
	Heating		-20 to 21	-20 to 21	-20 to 21	-20 to 21	-20 to 21	-20 to 21

Note: Specifications are based on the following conditions.

Cooling: Indoor temperature of 27°CDB / 19°CWB, and outdoor temperature of 35°CDB / 24°CWB.

Heating: Indoor temperature of 20°CDB / 15°CWB, and outdoor temperature of 7°CDB / 6°CWB.

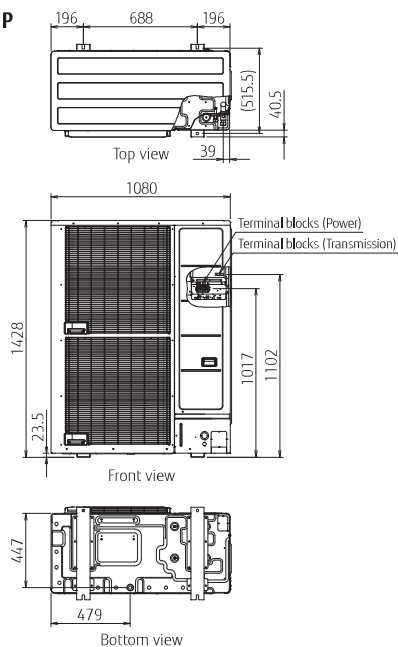
Pipe length: 7.5 m; Height difference between outdoor unit and indoor unit: 0 m.

* The cooling operation range of -15 to 46°C is allowed only when all of the indoor units connected to the system are higher than capacity of 5.6kW.

Dimensions

(Unit : mm)

8, 10, 12 HP



14, 16, 18 HP

