

Mini Duct

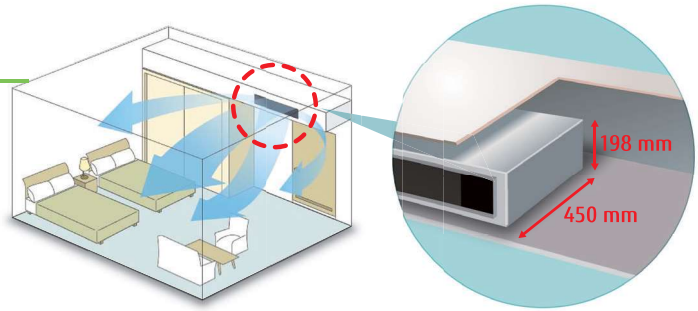
Built-in Drain Pump



Large living space available

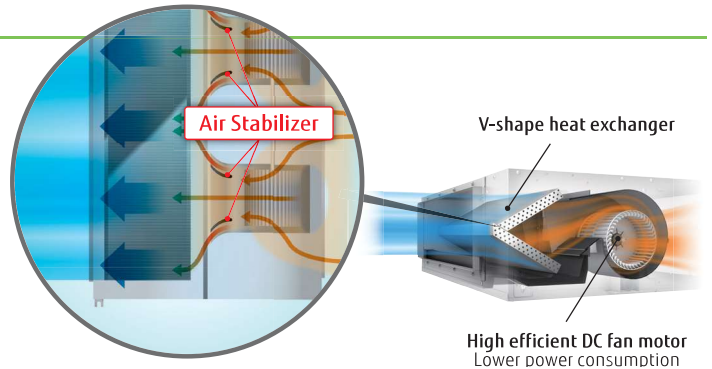
- Installation space can be reduced down to minimum depth 450 mm height 198 mm and compact design
- Lightweight: 15.5 kg 18% down (12/14 models*)

*:Compared with Slim duct 12/14models.



Optimum airflow path and low noise operation

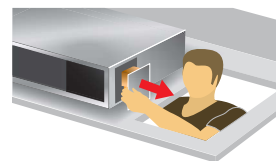
Low noise is realized drastically by stabilized airflow design.



Easy design and maintenance for drain

By using the DC fan motor, it is possible to change the static pressure range from 0 to 50 Pa*. The change of static pressure range is possible by remote controller.
*12 model: 0 to 30 Pa.

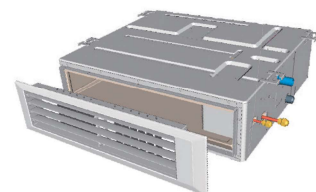
Built-in drain pump as standard:
Maintenance is easy



Parts can be replaced from the side of the body where maintenance is easier.

Auto Louver Grille Kit (Option)

- Thin design provides a comfortable living environment over a wide area.
- Automatic louver grille provides comfortable air conditioning all the way down to the floor and matches the interior design well. (Optional)



Model : ARYG12LSLAP / ARYG14LSLAP / ARYG18LSLAP



ARYG12/14LSLAP



ARYG18LSLAP



Wired R.C.



For ARYG12/14LSLAP



For ARYG18LSLAP

Specifications

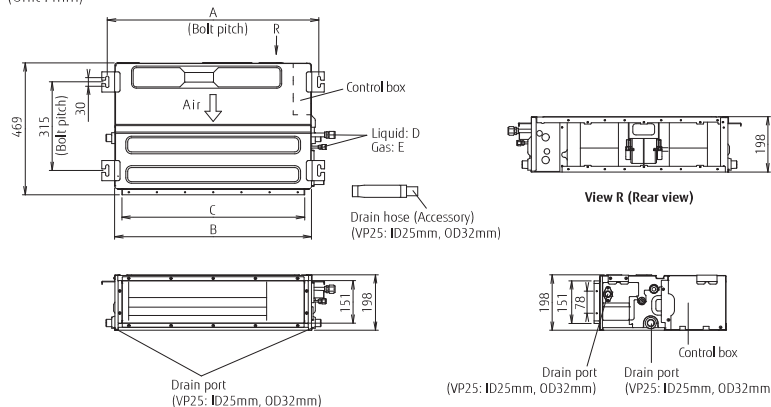
Model No.	Indoor unit		ARYG12LSLAP	ARYG14LSLAP	ARYG18LSLAP
	Outdoor unit		AOYG12LALL	AOYG14LALL	AOYG18LBCB
Power Source	Single phase, ~230V, 50Hz				
Capacity	Cooling	kW	3.5 (0.9-4.4)	4.3 (0.9-5.4)	5.2 (0.9-5.9)
	Heating		4.1 (0.9-5.7)	5.0 (0.9-6.5)	6.0 (0.9-7.5)
Input Power	Cooling/Heating		1.03/1.15	1.34/1.49	1.62/1.77
	Cooling	W/W	3.40	3.21	3.21
COP	Heating		3.56	3.35	3.38
Pdesign	Cooling/Heating(-10°C)		3.5/4.2	4.3/4.5	5.2/5.2
	Cooling	W/W	5.70	5.60	5.80
SEER	Heating		3.90	3.80	3.80
Energy Efficiency Class	Cooling		A+	A+	A+
	Heating		A	A	A
Max. Operating Current	Cooling/Heating		A	9.0/12.5	11.5/13.5
	Cooling	kWh/a	215	269	314
Annual Energy Consumption	Heating		1,505	1,656	1,913
Moisture Removal			l/h	1.2	1.4
	Indoor (Cooling)	H/M/L/Q	dB(A)	31/27/25/23	35/30/27/23
Indoor (Heating)	H/M/L/Q	31/27/25/23		33/29/26/23	
Sound Pressure Level	Outdoor(Cooling/Heating)		High	47/48	49/49
	Indoor(Cooling/Heating)	High	55/57	60/62	58/59
Sound Power Level	Outdoor(Cooling/Heating)		High	61/63	62/64
	Indoor / Outdoor (Cooling)	High	650/1,780	800/1,910	940/2,380
Airflow Rate	Indoor / Outdoor (Heating)		High	650/1,630	800/1,740
	Standard		Pa	0 to 30 (10)	0 to 50 (15)
Net Dimensions H x W x D	Indoor		mm	198×700×450	198×700×450
	Outdoor		mm	578×790×300	578×790×300
Weight	Indoor		kg(lbs)	15.5 (34)	15.5 (34)
	Outdoor		kg(lbs)	40 (88)	40 (88)
Connection Pipe Diameter (Liquid / Gas)			mm	6.35/9.52	6.35/12.70
Drain hose Diameter (I.D./O.D.)			mm	25/32	25/32
Max Pipe Length (Pre-Charge)			m	25 (15)	25 (15)
Max Height Difference				15	15
Operation Range	Cooling		°CDB	-10 to 46	-10 to 46
	Heating			-15 to 24	-15 to 24
Refrigerant	Type (Global Warming Potential)			R410A (2,088)	R410A (2,088)
	Charge		kg(CO2eq-T)	1.15 (2.401)	1.25 (2.610)

Optional parts

- Compact Wired Remote Controller: UTY-RCRYZ1
- Wired Remote Controller (Touch Panel): UTY-RNRYZ3
- Wired Remote Controller: UTY-RLRY, UTY-RNNYM, UTY-RVNYM
- Simple Remote Controller (Without operation mode): UTY-RHRY
- Simple Remote Controller: UTY-RSRY, UTY-RSNYM
- External Switch Controller: UTY-TERX
- Wireless LAN Interface: UTY-TFSXZ1, FJ-RC-WIFI-1
- KNX® Converter: UTY-VKSX
- MODBUS® Converter: UTY-VMSX
- Remote Sensor Unit: UTY-XSZX
- MODBUS® Interface: FJ-RC-MBS-1
- KNX® Interface: FJ-RC-KNX-1i
- Network Converter for single split (DC power supply type): UTY-VTGX
- Network Converter for single split (AC power supply type): UTY-VTGXV
- Auto Louver Grille Kit: UTD-GXTA-W (12/14), UTD-GXTB-W (18), UTY-LBTYM
- IR Receiver Unit: UTY-LBTYM
- External Connect Kit: UTY-XWZXZG

Dimensions

(Unit : mm)



	ARYG12/14LSLAP	ARYG18LSLAP
A	752	952
B	700	900
C	650	850
D	6.35	9.52
E	12.70	15.88

Slim Duct

Slim & Comfort



Slim design

The slim design allows installations where ceilings are narrow. Drain hose as standard accessory



Height **198 mm**
Drain pump built-in

Compact and lightweight outdoor unit

Compact and lightweight outdoor unit expands a wider range of choice for installation location. This makes it easier to use this outdoor unit.



Selectable with a wide range of static pressure

By using the DC fan motor, it is possible to change the static pressure range from 0 to 90 Pa. The change of static pressure range is possible by remote controller.



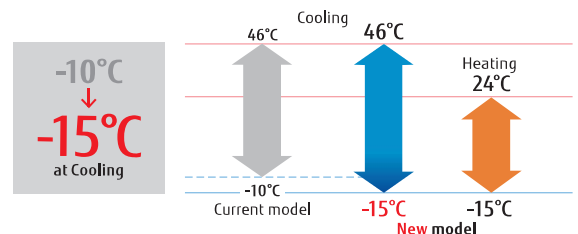
Static pressure range
0 to 90 Pa

Auto Louver Grille Kit (Option)

Simple flat Auto Louver will provide comfort airflow and harmonize with luxury interior.



Low ambient operation



Model : ARXG09KLLAP / ARXG12KLLAP / ARXG14KLLAP / ARXG18KLLAP



ARXG09/12/14KLLAP



ARXG18KLLAP



For ARXG09/12/14KLLAP



For ARXG18KLLAP

Specifications

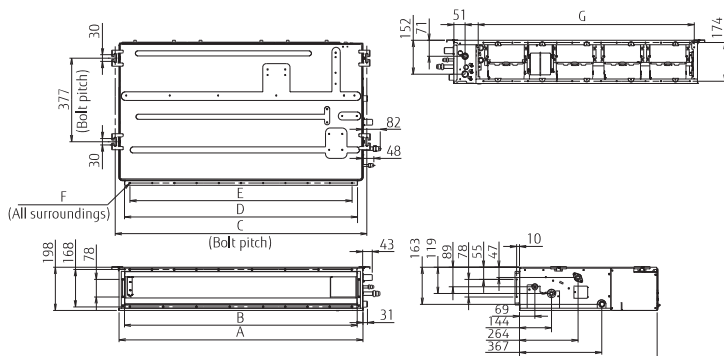
Model No.	Indoor unit		ARXG09KLLAP	ARXG12KLLAP	ARXG14KLLAP	ARXG18KLLAP	
	Outdoor unit		AOYG09KBTB	AOYG12KBTB	AOYG14KBTB	AOYG18KBTB	
Power Source	Single phase, ~230V, 50Hz						
Capacity	Cooling	kW	2.5 (0.9-3.2)	3.5 (0.9-4.4)	4.3 (0.9-5.4)	5.2 (0.9-5.9)	
	Heating		3.2 (0.9-4.7)	4.1 (0.9-5.7)	5.0 (0.9-6.5)	6.0 (0.9-7.5)	
Input Power	Cooling/Heating	kW	0.60/0.79	0.93/1.08	1.28/1.32	1.55/1.62	
EER	Cooling	W/W	4.17	3.76	3.36	3.35	
	Heating		4.05	3.80	3.79	3.70	
Pdesign	Cooling/Heating(-10°C)	kW	2.5/2.6	3.5/3.4	4.3/3.8	5.2/4.4	
SEER	Cooling	W/W	6.20	6.10	5.80	6.20	
	Heating		4.30	4.00	3.90	4.10	
Energy Efficiency Class	Cooling	A++		A+		A++	
	Heating	A+		A+		A+	
Max. Operating Current	Cooling/Heating	A	7.9/7.9	9.7/9.7	10.2/10.2	12.1/12.1	
Annual Energy Consumption	Cooling	kWh/a	141	201	259	293	
	Heating		845	1,189	1,362	1,501	
Moisture Removal		l/h	0.7	1.3	1.5	2.0	
Sound Pressure Level	Indoor (Cooling)	H/M/L/Q	dB(A)	28/27/26/25	29/28/26/25	32/30/28/26	32/30/29/27
	Indoor (Heating)	H/M/L/Q		28/26/25/24	29/28/26/24	32/30/28/25	32/30/29/27
	Outdoor(Cooling/Heating)	High		46/46	47/47	49/49	50/50
Sound Power Level	Indoor(Cooling/Heating)	High	57/57	58/58	60/60	58/58	
	Outdoor(Cooling/Heating)	High	59/59	61/61	62/62	62/62	
Airflow Rate	Indoor / Outdoor (Cooling)	High	600/1,480	650/1,580	800/1,670	940/2,160	
	Indoor / Outdoor (Heating)	High	600/1,410	650/1,520	800/1,580	940/1,830	
Static pressure range (Standard)		Pa	0 to 90 (25)	0 to 90 (25)	0 to 90 (25)	0 to 90 (25)	
Net Dimensions H x W x D	Indoor	mm	198x700x620	198x700x620	198x700x620	198x900x620	
	Outdoor	mm	542x799x290	542x799x290	542x799x290	632x799x290	
Weight	Indoor	kg(lbs)	17 (37)	17 (37)	17 (37)	20 (44)	
	Outdoor	kg(lbs)	32 (71)	33 (73)	33 (73)	36 (79)	
Connection Pipe Diameter (Liquid / Gas)		mm	6.35/9.52	6.35/9.52	6.35/9.52	6.35/12.70	
Drain hose Diameter (I.D./O.D.)		mm	25/32	25/32	25/32	25/32	
Max Pipe Length (Pre-Charge)		m	20 (15)	25 (15)	25 (15)	30 (20)	
Max Height Difference			15	20	20	20	
Operation Range	Cooling	°CDB	-15 to 46	-15 to 46	-15 to 46	-15 to 46	
	Heating		-15 to 24	-15 to 24	-15 to 24	-15 to 24	
Refrigerant	Type (Global Warming Potential)		R32 (675)	R32 (675)	R32 (675)	R32 (675)	
	Charge	kg(CO2eq-T)	0.85 (0.574)	0.85 (0.574)	0.85 (0.574)	1.02 (0.689)	

Optional parts

Compact Wired Remote Controller:	UTY-RCRYZ1	External Switch Controller:	UTY-TERX	Network Converter for single split (DC power supply type):	UTY-VTGX
Wired Remote Controller (Touch Panel):	UTY-RNRYZ3	Wireless LAN Interface:	UTY-TFSXZ1	Network Converter for single split (AC power supply type):	UTY-VTGXV
Wired Remote Controller:	UTY-RLRY		FJ-RC-WIFI-1	Fresh Air Intake Kit:	UTZ-VXAA
	UTY-RNNYM	KNX® Converter:	UTY-VKSX	Auto Louver Grille Kit:	UTD-GXTA-W (09-14)
	UTY-RVNYM	MODBUS® Converter:	UTY-VMSX		UTD-GXTB-W (18)
Simple Remote Controller (Without operation mode):	UTY-RHRY	Remote Sensor Unit:	UTY-XSZX	IR Receiver Unit:	UTY-LBTYM
Simple Remote Controller:	UTY-RSRY	MODBUS® Interface:	FJ-RC-MBS-1	External Connect Kit:	UTY-XWZXZG
	UTY-RSNYM	KNX® Interface:	FJ-RC-KNX-1i		

Dimensions

(Unit : mm)



	ARXG09/12/14KLLAP	ARXG18KLLAP
A	700	900
B	650	850
C	734	934
D	650	850
E	P100x6=600	P100x8=800
F	18xØ5	22xØ5
G	574	774

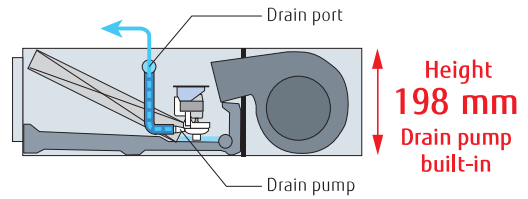
Slim Duct

Slim & Comfort



Slim design

The slim design allows installations where ceilings are narrow. Drain hose as standard accessory



Flexible installation

2-type installation methods of ceiling concealed and floor concealed can be selected.

Ceiling concealed

Floor concealed



Selectable with a wide range of static pressure

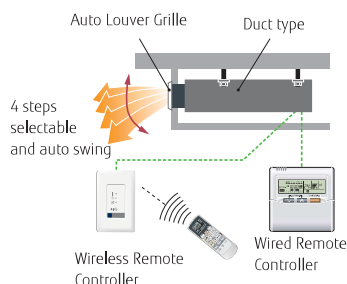
By using the DC fan motor, it is possible to change the static pressure range from 0 to 90 Pa. The change of static pressure range is possible by remote controller.



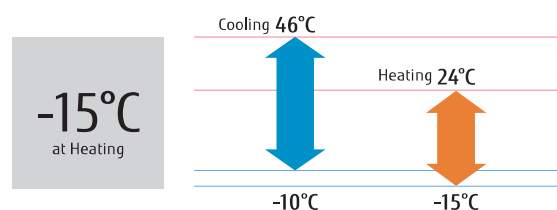
Static pressure range
0 to 90 Pa

Auto Louver Grille Kit (Option)

Simple flat Auto Louver will provide comfort airflow and harmonize with luxury interior.



Low ambient operation



Model : ARYG12LLTB / ARYG14LLTB / ARYG18LLTB



ARYG12/14LLTB



ARYG18LLTB



Wired R.C.



For ARYG12/14LLTB



For ARYG18LLTB

Specifications

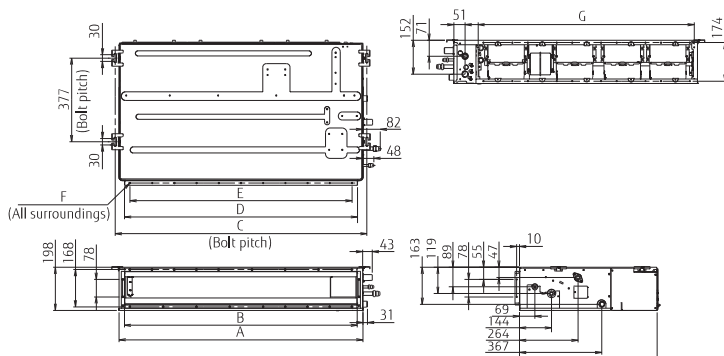
Model No.	Indoor unit		ARYG12LLTB	ARYG14LLTB	ARYG18LLTB
	Outdoor unit		AOYG12LALL	AOYG14LALL	AOYG18LBCB
Power Source	Single phase, ~230V, 50Hz				
Capacity	Cooling	kW	3.5 (0.9-4.4)	4.3 (0.9-5.4)	5.2 (0.9-5.9)
	Heating		4.1 (0.9-5.7)	5.0 (0.9-6.5)	6.0 (0.9-7.5)
Input Power	Cooling/Heating		1.05/1.11	1.33/1.34	1.62/1.66
	Cooling	W/W	3.33	3.21	3.21
COP	Heating		3.69	3.71	3.61
	Pdesign	Cooling/Heating(-10°C)		3.5/4.2	4.3/4.5
SEER		Cooling	5.90	5.80	6.20
	SCOP	Heating	4.00	3.90	4.10
Energy Efficiency Class		Cooling	A++	A+	A++
	Heating	A+	A	A+	
Max. Operating Current	Cooling/Heating		7.5/10.0	9.0/12.5	11.5/13.5
	Cooling	kWh/a	207	259	294
Annual Energy Consumption	Heating		1,467	1,614	1,775
	Moisture Removal			1.3	1.5
Sound Pressure Level		Indoor (Cooling)	H/M/L/Q	29/28/26/25	32/30/28/26
	Indoor (Heating)	H/M/L/Q	29/28/26/24	32/30/28/25	32/30/29/27
	Outdoor (Cooling/Heating)	High	47/48	49/49	50/50
Sound Power Level	Indoor (Cooling/Heating)	High	58/58	60/60	58/58
	Outdoor (Cooling/Heating)	High	61/63	62/64	62/65
	Indoor / Outdoor (Cooling)	High	650/1,780	800/1,910	940/2,380
Airflow Rate	Indoor / Outdoor (Heating)	High	650/1,630	800/1,740	940/2,080
	Static pressure range (Standard)		Pa	0 to 90 (25)	0 to 90 (25)
Net Dimensions H x W x D	Indoor	mm	198×700×620	198×700×620	198×900×620
	Outdoor	mm	578×790×300	578×790×300	632×799×290
Weight	Indoor	kg(lbs)	19 (42)	19 (42)	23 (51)
	Outdoor	kg(lbs)	40 (88)	40 (88)	36 (79)
Connection Pipe Diameter (Liquid / Gas)			6.35/9.52	6.35/12.70	6.35/12.70
Drain hose Diameter (I.D./O.D.)			25/32	25/32	25/32
Max Pipe Length (Pre-Charge)			25 (15)	25 (15)	25 (15)
Max Height Difference			15	15	15
Operation Range	Cooling	°CDB	-10 to 46	-10 to 46	-10 to 46
	Heating		-15 to 24	-15 to 24	-15 to 24
Refrigerant	Type (Global Warming Potential)		R410A (2,088)	R410A (2,088)	R410A (2,088)
	Charge		1.15 (2.401)	1.25 (2.610)	1.20 (2.506)

Optional parts

Wired Remote Controller:	UTY-RNNYM UTY-RVNYM	External Connect Kit:	UTD-ECSSA	Network Converter for single split (DC power supply type):	UTY-VTGX
Simple Remote Controller:	UTY-RSNYM	Auto Louver Grille Kit:	UTD-GXSA-W (12/14) UTD-GXSB-W (18) UTD-GXTA-W (12/14) UTD-GXTB-W (18)	Network Converter for single split (AC power supply type):	UTY-VTGXV
External Switch Controller:	UTY-TERX	IR Receiver Unit:	UTY-LRHYM	Remote Sensor Unit:	UTY-XSZX
Wireless LAN Interface:	UTY-TFNXZ1 FJ-RC-WIFI-1			MODBUS® Interface:	FJ-RC-MBS-1
				KNX® Interface:	FJ-RC-KNX-11

Dimensions

(Unit : mm)



	ARYG12 / 14LLTB	ARYG18LLTB
A	700	900
B	650	850
C	734	934
D	650	850
E	P100x6=600	P100x8=800
F	18xØ5	22xØ5
G	574	774

Medium Static Pressure Duct

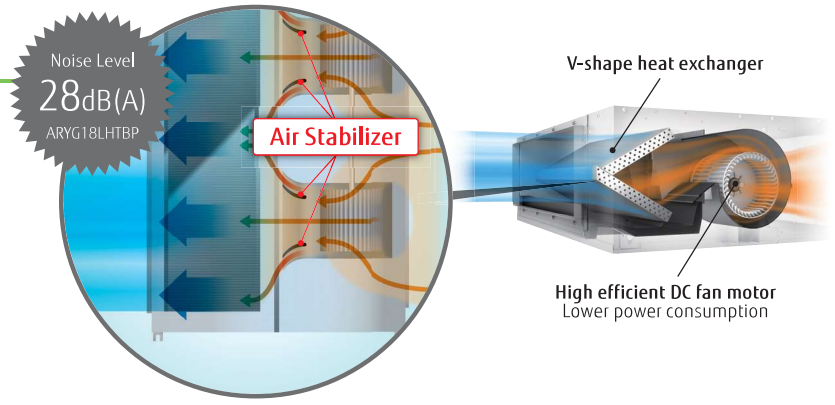
Compact & Comfort



(30/36/45/54)

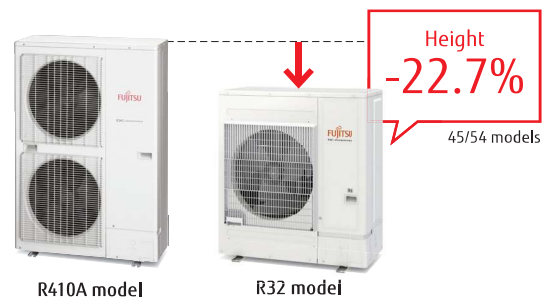
High Efficiency & Quiet operation

The combination of the V-shaped heat exchanger, air stabilizer, and the high efficient DC fan motor allowed high efficiency and quiet operation.



Small and light weight outdoor unit

This model is much more compact than conventional outdoor unit. It can be installed in a narrow place.

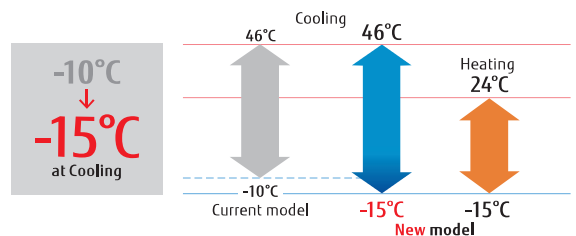


Automatic Airflow adjustment function

This unique and innovative function detects required air flow in each application case and automatically adjust the volume.



Low ambient operation





**Model: ARXG12KHTAP / ARXG14KHTAP / ARXG18KHTAP / ARXG22KHTAP / ARXG24KHTAP
ARXG30KHTAP / ARXG36KHTAP / ARXG45KHTAP / ARXG54KHTAP
ARXG36KHTAP [3 phase] / ARXG45KHTAP [3 phase] / ARXG54KHTAP [3 phase]**



Specifications

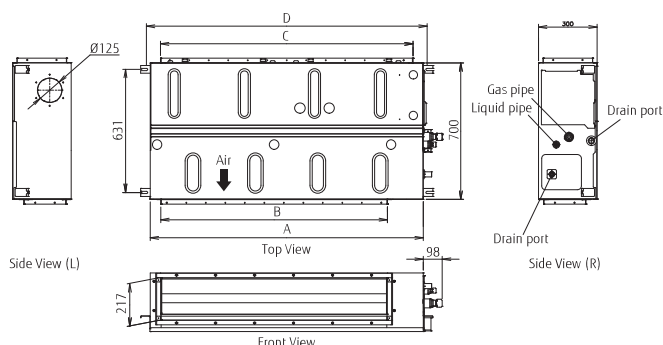
Model No.	Indoor unit		ARXG12KHTAP	ARXG14KHTAP	ARXG18KHTAP	ARXG22KHTAP	ARXG24KHTAP	ARXG30KHTAP	ARXG36KHTAP	ARXG45KHTAP	ARXG54KHTAP	ARXG36KHTAP	ARXG45KHTAP	ARXG54KHTAP
	Outdoor unit		AOYG12KBTB	AOYG14KBTB	AOYG18KBTB	AOYG22KBTB	AOYG24KBTB	AOYG30KBTB	AOYG36KBTB	AOYG45KBTB	AOYG54KBTB	AOYG36KRTA	AOYG45KRTA	AOYG54KRTA
Power Source			Single phase, ~230V, 50Hz									3 phase, ~400V, 50Hz		
Capacity	Cooling	kW	3.5 (0.9-4.4)	4.3 (0.9-5.4)	5.2 (0.9-5.9)	6.0 (0.9-6.7)	6.8 (0.9-8.0)	8.5 (2.8-10.0)	9.5 (2.8-11.2)	12.1 (4.0-14.0)	13.4 (4.5-14.5)	9.5 (2.8-11.2)	12.1 (4.0-14.0)	13.4 (4.5-14.5)
	Heating		4.1 (0.9-5.7)	5.0 (0.9-6.5)	6.0 (0.9-7.5)	7.0 (0.9-8.0)	7.5 (0.9-9.1)	10.0 (2.7-11.2)	10.8 (2.7-12.7)	13.5 (4.2-16.2)	15.5 (4.7-16.5)	10.8 (2.7-12.7)	13.5 (4.2-16.2)	15.5 (4.7-16.5)
Input Power	Cooling/Heating	kW	0.8/1.00	1.1/1.25	1.36/1.56	1.7/1.81	1.89/1.85	2.65/2.63	2.86/2.48	3.53/3.37	4.42/3.89	2.86/2.48	3.53/3.37	4.42/3.89
EER	Cooling	W/W	4.02	3.68	3.82	3.51	3.60	3.21	3.32	3.43	3.03	3.32	3.43	3.03
	Heating		4.10	4.00	3.85	3.87	4.06	3.80	4.35	4.01	3.98	4.35	4.01	3.98
Pdesign	Cooling/Heating(-10°C)	kW	3.5/3.4	4.3/3.8	5.2/4.4	6.0/4.8	6.8/6.0	8.5/8.0	9.5/8.7	-	-	9.5/8.7	-	-
SEER	Cooling	W/W	6.30	6.20	6.50	6.50	6.50	6.23	6.10	-	-	6.10	-	-
SCOP	Heating (Average)	W/W	4.10	4.00	4.10	4.20	4.10	4.00	4.20	-	-	4.20	-	-
Energy Efficiency Class	Cooling		A++	A++	A++	A++	A++	A++	A++	-	-	A++	-	-
	Heating (Average)		A+	A+	A+	A+	A+	A+	A+	-	-	A+	-	-
Max. Operating Current	Cooling/Heating	A	9.7/9.7	10.2/10.2	12.1/12.1	12.6/12.6	13.6/13.6	22.6/22.6	22.6/22.6	28.5/28.5	28.5/28.5	10.5/10.5	14.0/14.0	14.0/14.0
Annual Energy Consumption	Cooling	kWh/a	194	243	280	323	366	477	544	-	-	544	-	-
	Heating		1,159	1,328	1,501	1,597	2,048	2,796	2,898	-	-	2,898	-	-
Moisture Removal		l/h	0.7	0.9	1.2	1.5	1.8	2.3	2.0	2.6	3.7	2.0	2.6	3.7
Sound Pressure Level	Indoor (Cooling)	H/M/L/Q	32/27/26/24	33/28/27/25	28/25/22/20	28/25/22/20	32/28/24/21	36/33/30/29	36/31/28/26	39/35/31/29	39/35/31/29	36/31/28/26	39/35/31/29	39/35/31/29
	Indoor (Heating)	H/M/L/Q	32/27/26/24	33/28/27/25	28/25/22/20	28/25/22/20	32/28/24/21	36/33/30/29	33/31/28/26	39/35/31/29	39/35/31/29	33/31/28/26	39/35/31/29	39/35/31/29
Sound Power Level	Outdoor (Cooling/Heating)	High	47/47	49/49	50/50	51/51	53/54	53/55	55/55	57/57	57/59	55/55	57/57	57/59
	Indoor (Cooling/Heating)	High	57/58	59/60	54/54	57/57	57/57	63/65	64/63	67/69	67/69	64/63	67/69	67/69
Airflow Rate	Indoor / Outdoor (Cooling)	High	61/61	62/62	62/62	63/63	65/66	68/69	70/70	71/71	73/73	70/70	71/71	73/73
	Indoor / Outdoor (Heating)	High	850/1,520	950/1,580	1,050/1,830	1,050/1,960	1,360/2,700	1,700/3,750	1,850/3,750	2,550/4,450	2,550/4,450	1,850/3,750	2,550/4,450	2,550/4,450
Static pressure range (Standard)		Pa	30 to 200 (35)	30 to 200 (35)	30 to 200 (35)	30 to 200 (35)	30 to 200 (35)	30 to 200 (47)	30 to 200 (47)	30 to 200 (60)	30 to 200 (60)	30 to 200 (47)	30 to 200 (60)	30 to 200 (60)
Net Dimensions H x W x D	Indoor	mm	300x700x700	300x700x700	300x1,000x700	300x1,000x700	300x1,000x700	300x1,000x700	300x1,400x700	300x1,400x700	300x1,400x700	300x1,400x700	300x1,400x700	300x1,400x700
Weight	Outdoor	mm	542x799x290	542x799x290	632x799x290	632x799x290	716x820x315	788x940x320	788x940x320	998x940x320	998x940x320	788x940x320	998x940x320	998x940x320
	Indoor	kg (lbs)	27 (60)	27 (60)	35 (77)	35 (77)	36 (79)	36 (79)	46 (101)	46 (101)	46 (101)	46 (101)	46 (101)	46 (101)
Weight	Outdoor	kg (lbs)	33 (73)	33 (73)	36 (79)	38 (84)	42 (93)	52 (115)	52 (115)	67 (148)	67 (148)	53 (117)	67 (148)	67 (148)
	Indoor	mm	6.35/9.52	6.35/9.52	6.35/12.70	6.35/12.70	6.35/12.70	9.52/15.88	9.52/15.88	9.52/15.88	9.52/15.88	9.52/15.88	9.52/15.88	9.52/15.88
Connection Pipe Diameter (Liquid / Gas)		mm	25/32	25/32	25/32	25/32	25/32	25/32	25/32	25/32	25/32	25/32	25/32	25/32
Drain hose Diameter (I.D./O.D.)		mm	25 (15)	25 (15)	30 (20)	30 (20)	30 (20)	50 (30)	50 (30)	50 (30)	50 (30)	50 (30)	50 (30)	50 (30)
Max Pipe Length (Pre-Charge)		m	20	20	20	25	25	30	30	30	30	30	30	30
Operation Range	Cooling	°CDB	-15 to 46	-15 to 46	-15 to 46	-15 to 46	-15 to 46	-15 to 46	-15 to 46	-15 to 46	-15 to 46	-15 to 46	-15 to 46	-15 to 46
	Heating		-15 to 24	-15 to 24	-15 to 24	-15 to 24	-15 to 24	-15 to 24	-15 to 24	-15 to 24	-15 to 24	-15 to 24	-15 to 24	-15 to 24
Refrigerant	Type (Global Warming Potential)		R32 (675)	R32 (675)	R32 (675)	R32 (675)	R32 (675)	R32 (675)	R32 (675)	R32 (675)	R32 (675)	R32 (675)	R32 (675)	R32 (675)
	Charge	kg(CO2eq-T)	0.85 (0.574)	0.85 (0.574)	1.02 (0.689)	1.25 (0.844)	1.25 (0.844)	1.90 (1.283)	1.90 (1.283)	2.70 (1.823)	2.70 (1.823)	1.90 (1.283)	2.70 (1.823)	2.70 (1.823)

Optional parts

Compact Wired Remote Controller:	UTY-RCRYZ1	KNX® Converter:	UTY-VKXS	Wireless LAN Interface:	UTY-TFSXZ1
Wired Remote Controller (Touch Panel):	UTY-RNRYZ3	MODBUS® Converter:	UTY-VMSX		FJ-RC-WIFI-1
Wired Remote Controller:	UTY-RLRY	External input and output PCB:	UTY-XCSX	IR Receiver Unit:	UTY-LBTYM
	UTY-RNNYM	External Connect Kit:	UTY-XWZXZG	Network Converter for single split (DC power supply type):	UTY-VTGX
	UTY-RVNYM	External input and output PCB:	UTZ-GXNA	Network Converter for single split (AC power supply type):	UTY-VTGVX
Simple Remote Controller (Without operation mode):	UTY-RHRY	Long-Life Filter:	UTD-LFNA (36-54)		
Simple Remote Controller:	UTY-RSRY		UTD-LFNB (18-30)	(Outdoor unit 30/36/45/54)	
	UTY-RSNYM	MODBUS® Interface:	UTD-LFNC (12-14)	External Connect Kit:	UTY-XWZXZ3
External Switch Controller:	UTY-TERX	KNX® Interface:	FJ-RC-MBS-1		
Remote Sensor Unit:	UTY-XSZX		FJ-RC-KNX-1i		

Dimensions

(Unit : mm)



	ARXG12/14KHTAP	ARXG18/22/24/30KHTAP	ARXG36/45/54KHTAP
A	700	1,000	1,400
B	462	762	1,162
C	650	895	1,295
D	740	1,040	1,440

Medium Static Pressure Duct

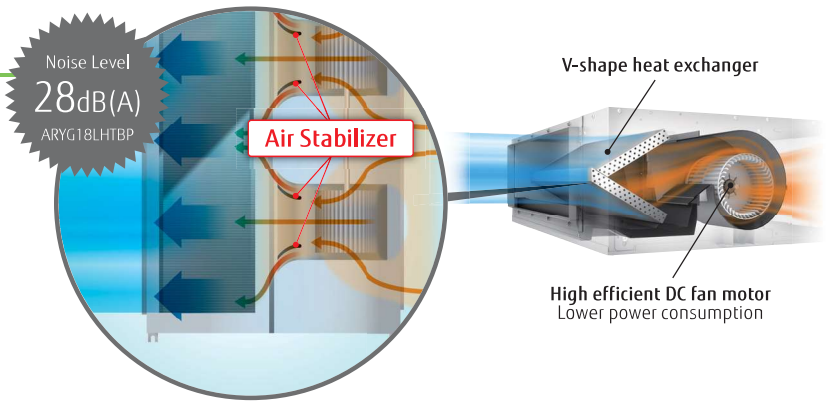
Compact & Comfort



(30/36/45/54)

High Efficiency & Quiet operation

The combination of the V-shaped heat exchanger, air stabilizer, and the high efficient DC fan motor allowed high efficiency and quiet operation.



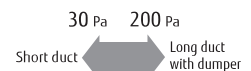
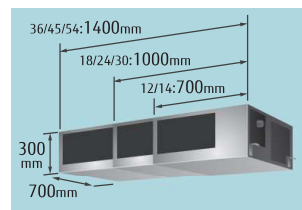
Automatic Airflow adjustment function

This unique and innovative function detects required air flow in each application case and automatically adjust the volume.



Improved installation flexibility

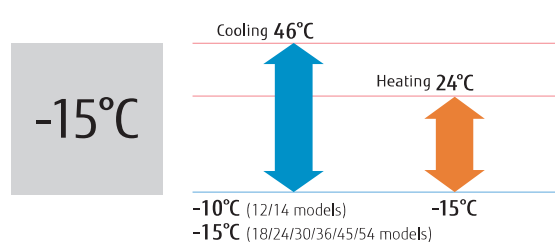
- Capable to be installed in various applications that requires static pressure of 30 Pa to 200 Pa*
 - Built-in drain pump, rises drain up to 850 mm
 - Unified depth throughout the range enables the selection of the capacity regardless of the additional space.
- (*: 12/14/18/24/30/36 models)



Improved service and maintenance

- Drain pump is easily detachable from the side
- Easy access to electrical box
- Error code can be checked more in detail from error history

Low ambient operation



**Model: ARYG12LHTBP / ARYG14LHTBP / ARYG18LHTBP / ARYG24LHTBP
ARYG30LHTBP / ARYG36LHTBP / ARYG45LHTBP / ARYG54LHTBP**



ARYG12/14LHTBP



ARYG18/24/30LHTBP



ARYG36/45/54LHTBP



Touch Panel Wired R.C.



For ARYG12/14LHTBP



For ARYG18/24LHTBP



For ARYG30/36LHTBP



For ARYG45/54LHTBP

Specifications

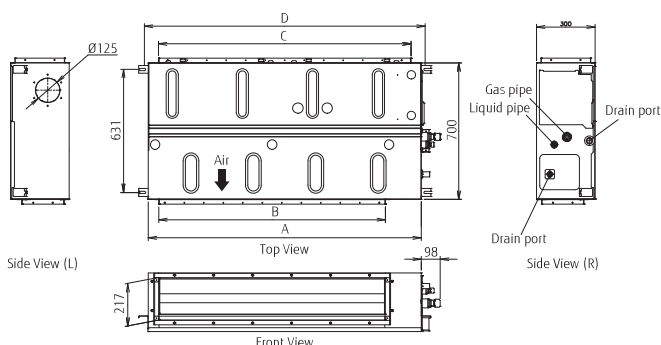
Model No.	Indoor unit		ARYG12LHTBP	ARYG14LHTBP	ARYG18LHTBP	ARYG24LHTBP	ARYG30LHTBP	ARYG36LHTBP	ARYG45LHTBP	ARYG54LHTBP
	Outdoor unit		AOYG12LBLA	AOYG14LBLA	AOYG18LBCA	AOYG24LBCA	AOYG30LBTA	AOYG36LBTA	AOYG45LBTA	AOYG54LBTA
Power Source			Single phase, ~230V, 50Hz							
Capacity	Cooling	kW	3.5 (0.9-4.4)	4.3 (0.9-5.4)	5.2 (0.9-6.5)	6.8 (0.9-8.0)	8.5 (2.8-10.0)	9.4 (2.8-11.2)	12.1 (4.0-14.0)	13.4 (4.5-14.5)
	Heating		4.1 (0.9-5.7)	5.0 (0.9-6.5)	6.0 (0.9-8.0)	8.0 (0.9-9.1)	10.0 (2.7-11.2)	11.2 (2.7-12.7)	13.3 (4.2-16.2)	16.0 (4.7-16.5)
Input Power	Cooling/Heating	kW	0.90/1.00	1.18/1.25	1.37/1.48	1.95/2.21	2.65/2.70	2.83/3.07	3.59/3.44	4.42/4.62
EER	Cooling	W/W	3.89	3.64	3.80	3.49	3.21	3.32	3.37	3.03
	Heating		4.10	4.00	4.05	3.62	3.70	3.65	3.87	3.46
Pdesign	Cooling/Heating(-10°C)	kW	3.5/4.2	4.3/4.5	5.2/ 4.3	6.8/ 6.0	8.5/8.0	9.4/8.7	-	-
SEER	Cooling	W/W	6.20	6.10	7.15	6.50	5.95	5.81	-	-
	Heating (Average)		4.10	4.00	4.11	4.01	3.95	3.81	-	-
Energy Efficiency Class	Cooling	A++								
	Heating (Average)	A+								
Max. Operating Current	Cooling/Heating	A	8.0/10.5	9.5/13.0	10.0/13.5	13.5/18.5	17.0/17.0	20.0/20.0	22.5/22.5	23.5/23.5
Annual Energy Consumption	Cooling	kWh/a	198	247	255	366	500	566	-	-
	Heating		1,434	1,573	1,462	2,092	2,833	3,194	-	-
Moisture Removal		l/h	0.7	0.9	1.2	1.8	2.3	2.0	2.6	3.7
Sound Pressure Level	Indoor (Cooling)	H/M/L/Q	32/21/26/24							
	Indoor (Heating)	H/M/L/Q	33/28/27/25							
Sound Power Level	Outdoor (Cooling/Heating)	High	47/48	49/49	50/51	55/56	53/55	54/55	55/55	55/57
	Indoor (Cooling/Heating)	High	57/58	59/60	54/54	57/57	63/65	64/63	67/69	67/69
Airflow Rate	Indoor / Outdoor (Cooling)	High	850/1,780	950/1,910	1,050/1,900	1,360/2,460	1,700/3,600	1,850/3,800	2,550/6,750	2,550/6,750
	Indoor / Outdoor (Heating)	High	850/1,630	950/1,740	1,050/1,700	1,360/2,340	1,700/3,600	1,850/3,800	2,550/6,200	2,550/6,850
Static pressure range (Standard)		Pa	30 to 200 (35)	30 to 200 (35)	30 to 200 (35)	30 to 200 (35)	30 to 200 (47)	30 to 200 (47)	30 to 200 (60)	30 to 200 (60)
Net Dimensions H x W x D	Indoor	mm	300×700×700	300×700×700	300×1,000×700	300×1,000×700	300×1,400×700	300×1,400×700	300×1,400×700	300×1,400×700
Weight	Indoor	kg(lbs)	27 (60)	27 (60)	36 (79)	36 (79)	36 (79)	46 (101)	46 (101)	46 (101)
	Outdoor	kg(lbs)	40 (88)	40 (88)	41 (90)	41 (90)	61 (134)	61 (134)	86 (190)	86 (190)
Connection Pipe Diameter (Liquid / Gas)		mm	6.35/9.52	6.35/12.70	6.35/12.70	6.35/15.88	9.52/15.88	9.52/15.88	9.52/15.88	9.52/15.88
Drain hose Diameter (I.D./O.D.)		mm	25/32	25/32	25/32	25/32	25/32	25/32	25/32	25/32
Max Pipe Length (Pre-Charge)		m	25 (15)	25 (15)	30 (15)	30 (15)	50 (20)	50 (20)	50 (20)	50 (20)
Max Height Difference		m	15	15	20	20	30	30	30	30
Operation Range	Cooling	°CDB	-10 to 46	-10 to 46	-15 to 46	-15 to 46	-15 to 46	-15 to 46	-15 to 46	-15 to 46
	Heating	°CDB	-15 to 24	-15 to 24	-15 to 24	-15 to 24	-15 to 24	-15 to 24	-15 to 24	-15 to 24
Refrigerant	Type (Global Warming Potential)		R410A (2,088)	R410A (2,088)	R410A (2,088)	R410A (2,088)	R410A (2,088)	R410A (2,088)	R410A (2,088)	R410A (2,088)
	Charge	kg(CO ₂ eq-l)	1.15 (2.401)	1.25 (2.610)	1.80 (3.758)	1.80 (3.758)	2.10 (4.385)	2.10 (4.385)	3.35 (6.995)	3.35 (6.995)

Optional parts

Compact Wired Remote Controller:	UTY-RCRYZ1	KNX® Converter:	UTY-VKSX	Wireless LAN Interface:	UTY-TFNXZ1
Wired Remote Controller (Touch Panel):	UTY-RNRYZ3	MODBUS® Converter:	UTY-VMSX		FJ-RC-WIFI-1
Wired Remote Controller:	UTY-RLRY	External input and output PCB:	UTY-XCSX	IR Receiver Unit:	UTY-LBTYM
	UTY-RNNYM	External Connect Kit	UTY-XWZXZG	Network Converter for single split (DC power supply type):	UTY-VTGX
	UTY-RVNYM	External input and output PCB Bracket:	UTZ-GXNA	Network Converter for single split (AC power supply type):	UTY-VTGVX
Simple Remote Controller (Without operation mode):	UTY-RHRY	Long-Life Filter	UTD-LFNA (36-54)		
Simple Remote Controller:	UTY-RSRY		UTD-LFNB (18-30)	(Outdoor unit 45/54)	
	UTY-RSNYM	MODBUS® Interface:	UTD-LFNC (12-14)	External Connect Kit:	UTY-XWZXZ3
External Switch Controller:	UTY-TERX	KNX® Interface:	FJ-RC-MBS-1		
Remote Sensor Unit:	UTY-XSZX		FJ-RC-KNX-Ii		

Dimensions

(Unit : mm)



	ARYG12/14LHTBP	ARYG18/24/30LHTBP	ARYG36/45/54LHTBP
A	700	1,000	1,400
B	462	762	1,162
C	650	895	1,295
D	740	1,040	1,440

Medium Static Pressure Duct Standard

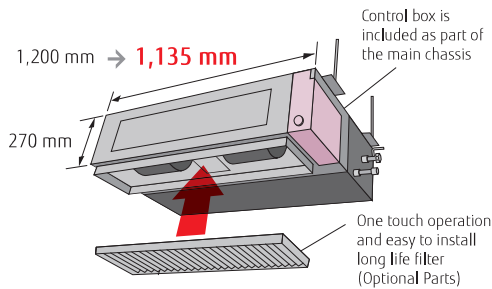


(45)

Slim & Compact design

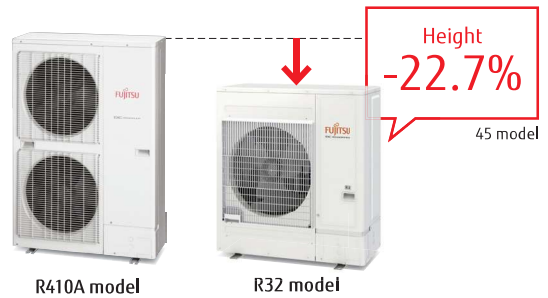
Indoor Unit

The slim and compact design of the indoor unit, with the control box mounted on the side of the unit, allows installation in narrow spaces.



New Outdoor Unit

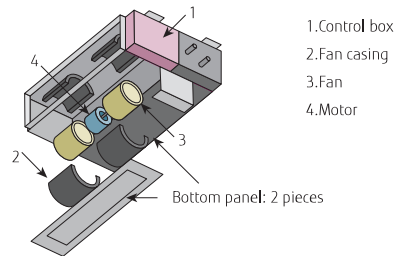
45 model outdoor unit was changed completely. Easier installation was realized by compact and lightweight outdoor unit.



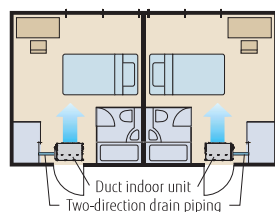
Easy maintenance

Structural improvement is attained by making the bottom panel two pieces, front and rear. The internal fan casing is also manufactured in two pieces, namely upper and lower. The maintenance of the motor and fan can be easily carried out by removing the rear panel and the lower part of the casing while leaving the main chassis installed.

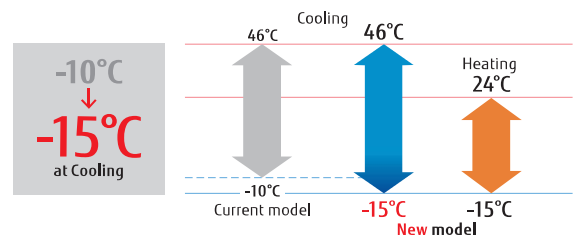
See below for the case of rear suction type



Two-direction drain piping



All class low ambient operation



**Model : ARXG22KMLA / ARXG24KMLA / ARXG30KMLA / ARXG36KMLA / ARXG45KMLA
ARXG36KMLA [3 phase] / ARXG45KMLA [3 phase]**



Specifications

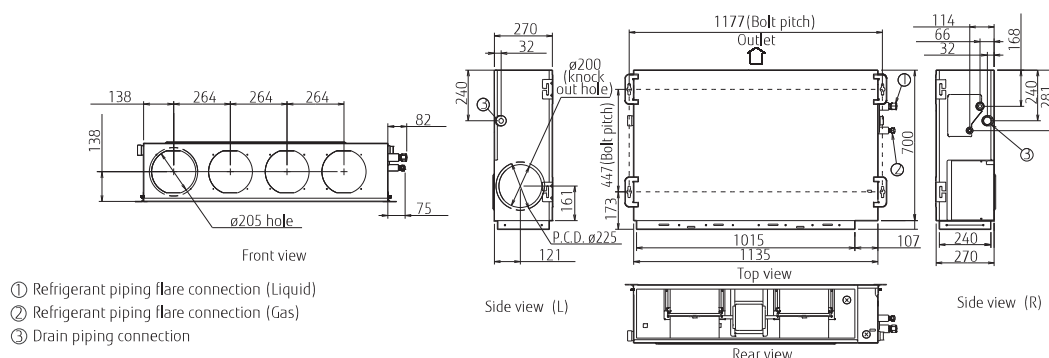
Model No.	Indoor unit		ARXG22KMLA	ARXG24KMLA	ARXG30KMLA	ARXG36KMLA	ARXG45KMLA	ARXG36KMLA	ARXG45KMLA
	Outdoor unit		AOYG22KBTB	AOYG24KBTB	AOYG30KBTB	AOYG36KBTB	AOYG45KBTB	AOYG36KRTA	AOYG45KRTA
Power Source	Single phase, ~230V, 50Hz						3 phase, ~400V, 50Hz		
Capacity	Cooling	kW	6.0 (0.9-6.7)	6.8 (0.9-8.0)	8.5 (2.8-10.0)	9.5 (2.8-11.2)	12.1 (4.0-13.0)	9.5 (2.8-11.2)	12.1 (4.0-13.0)
	Heating		7.0 (0.9-8.0)	7.5 (0.9-9.1)	10.0 (2.7-11.2)	10.8 (2.7-12.7)	13.5 (4.2-15.2)	10.8 (2.7-12.7)	13.5 (4.2-15.2)
Input Power	Cooling/Heating	kW	1.78/1.87	2.14/1.97	2.65/2.63	2.97/2.88	4.22/3.84	2.97/2.88	4.22/3.84
EER	Cooling	W/W	3.37	3.18	3.21	3.20	2.87	3.20	2.87
	Heating		3.74	3.80	3.80	3.75	3.52	3.75	3.52
Pdesign	Cooling/Heating(-10°C)	kW	6.0/4.8	6.8/6.0	8.5/8.0	9.5/8.7	-	9.5/8.7	-
SEER	Cooling	W/W	6.10	6.20	6.23	6.10	-	6.10	-
	Heating		4.10	4.10	4.00	4.00	-	4.00	-
Energy Efficiency Class	Cooling	-	A++	A++	A++	A++	-	A++	-
	Heating		A+	A+	A+	A+	-	A+	-
Max. Operating Current	Cooling/Heating	A	12.6/12.6	13.6/13.6	22.6/22.6	22.6/22.6	28.5/28.5	10.5/10.5	14.0/14.0
Annual Energy Consumption	Cooling	kWh/a	344	384	477	545	-	545	-
	Heating		1,637	2,045	2,797	3,044	-	3,044	-
Moisture Removal		l/h	2.1	2.5	2.5	3.0	4.0	3.0	4.0
Sound Pressure Level	Indoor (Cooling)	H/M/L/Q	31/29/27/25	31/29/27/25	39/35/30/26	39/35/30/26	42/38/32/28	39/35/30/26	42/38/32/28
	Indoor (Heating)	H/M/L/Q	31/29/27/25	31/29/27/25	42/35/30/26	42/35/30/26	42/38/32/28	42/35/30/26	42/38/32/28
	Outdoor(Cooling/Heating)	High	51/51	53/54	53/55	55/55	57/57	55/55	57/57
Sound Power Level	Indoor(Cooling/Heating)	High	60/62	60/62	65/69	65/70	68/70	65/70	68/70
	Outdoor(Cooling/Heating)	High	63/63	65/66	68/69	70/70	71/71	70/70	71/71
Airflow Rate	Indoor / Outdoor (Cooling)	High	1,100/2,240	1,100/2,700	1,900/3,750	1,900/3,750	2,100/4,450	1,900/3,750	2,100/4,450
	Indoor / Outdoor (Heating)	High	1,100/1,960	1,100/2,700	2,100/3,750	2,100/3,750	2,100/4,450	2,100/3,750	2,100/4,450
Static pressure range (Standard)		Pa	30 to 150 (35)	30 to 150 (35)	30 to 150 (47)	30 to 150 (47)	30 to 150 (60)	30-150 (47)	30-150 (60)
Net Dimensions H x W x D	Indoor	mm	270x1,135x700	270x1,135x700	270x1,135x700	270x1,135x700	270x1,135x700	270x1,135x700	270x1,135x700
Weight	Indoor	kg(lbs)	35 (77)	35 (77)	38 (84)	38 (84)	39 (86)	38 (84)	39 (86)
	Outdoor	kg(lbs)	38 (84)	42 (93)	52 (115)	52 (115)	67 (148)	53 (117)	67 (148)
Connection Pipe Diameter (Liquid / Gas)		mm	6.35/12.70	6.35/12.70	9.52/15.88	9.52/15.88	9.52/15.88	9.52/15.88	9.52/15.88
Drain hose Diameter (I.D./O.D.)		mm	35.7/38.1	35.7/38.1	35.7/38.1	35.7/38.1	35.7/38.1	35.7/38.1	35.7/38.1
Max Pipe Length (Pre-Charge)		m	30 (20)	30 (20)	50 (30)	50 (30)	50 (30)	50 (30)	50 (30)
Max Height Difference			25	25	30	30	30	30	30
Operation Range	Cooling	°CDB	-15 to 46	-15 to 46	-15 to 46	-15 to 46	-15 to 46	-15 to 46	-15 to 46
	Heating		-15 to 24	-15 to 24	-15 to 24	-15 to 24	-15 to 24	-15 to 24	-15 to 24
Refrigerant	Type (Global Warming Potential)		R32 (675)	R32 (675)	R32 (675)	R32 (675)	R32 (675)	R32 (675)	R32 (675)
	Charge	kg(CO2eq-T)	1.25 (0.844)	1.25(0.844)	1.90(1.283)	1.90(1.283)	2.70(1.823)	1.90(1.283)	2.70(1.823)

Optional parts

Compact Wired Remote Controller: UTY-RCRYZ1	External Switch Controller: UTY-TERX	Network Converter for single split (DC power supply type): UTY-VTGX
Wired Remote Controller (Touch Panel): UTY-RNRYZ3	Wireless LAN Interface: UTY-TFSXZ1	Network Converter for single split (AC power supply type): UTY-VTGXV
Wired Remote Controller: UTY-RLRY	FJ-RC-WIFI-1	Remote Sensor Unit: UTY-XSZX
UTY-RNNYM	KNX® Converter: UTY-VKSX	External Connect Kit: UTY-XWZXZG
UTY-RVNYM	MODBUS® Converter: UTY-VMSX	Drain Pump Unit: UTZ-PXINBA
Simple Remote Controller (Without operation mode): UTY-RHRY	Flange (Round): UTD-LF25NA	Long-Life Filter: UTD-SF045T
Simple Remote Controller: UTY-RSRY	Flange (Square): UTD-RF204	
UTY-RSNYM	MODBUS® Interface: FJ-RC-MBS-1	
IR Receiver Unit: UTY-LBTYM	KNX® Interface: FJ-RC-KNX-1i	(Outdoor unit 30/36/45/54) External Connect Kit: UTY-XWZXZ3

Dimensions

(Unit : mm)

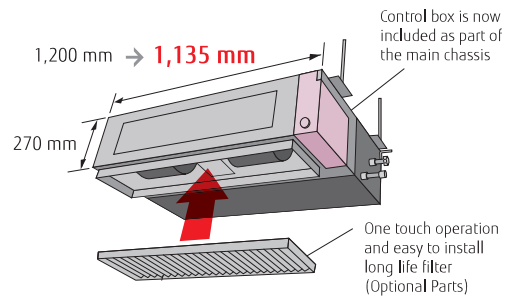


Medium Static Pressure Duct Standard



Slim & Compact design

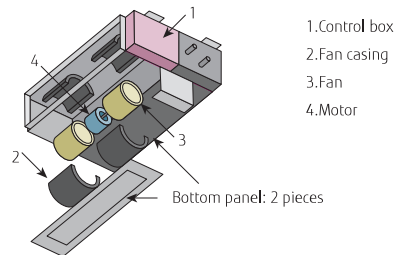
In the case of bottom return air connection, not only does the indoor unit design allow for installation in a narrow ceiling space of up to 270 mm, further space savings have been achieved by mounting the control box internally inside the chassis.



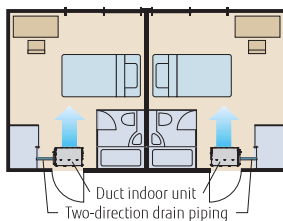
Easy maintenance

Structural improvement is attained by making the bottom panel two pieces, front and rear. The internal fan casing is also manufactured in two pieces, namely upper and lower. The maintenance of the motor and fan can be easily carried out by removing the rear panel and the lower part of the casing while leaving the main chassis installed.

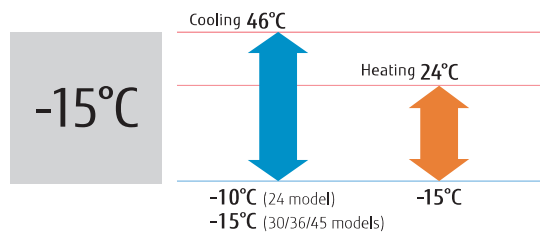
See below for the case of rear suction type



Two-direction drain piping



Low ambient operation



Model : ARYG24MLA / ARYG30MLE / ARYG36MLE / ARYG45MLA / ARYG36MLA [3 phase] / ARYG45MLA [3 phase]



Wired R.C.



For ARYG24MLA



For ARYG30/36MLE



For ARYG45MLA (Single phase)



For ARYG36/45MLA

Specifications

Model No.	Indoor unit		ARYG24MLA	ARYG30MLE	ARYG36MLE	ARYG45MLA	ARYG45MLA	ARYG36MLA	ARYG45MLA	
	Outdoor unit		AOYG24LBCB	AOYG30LETL	AOYG36LETL	AOYG45LBTC	AOYG45LETL	AOYG36LATT	AOYG45LATT	
Power Source	Single phase, ~230V, 50Hz							3 phase, ~400V, 50Hz		
Capacity	Cooling	kW	6.8 (0.9-8.0)	8.5 (2.8-10.0)	9.4 (2.8-11.2)	12.1 (4.0-13.0)	12.1 (4.0-13.3)	10.0 (4.7-11.4)	12.5 (5.0-14.0)	
	Heating		8.0 (0.9-9.1)	10.0 (2.7-11.2)	11.2 (2.7-12.7)	13.3 (4.2-15.2)	13.1 (4.2-15.5)	11.2 (5.0-14.0)	14.0 (5.4-16.2)	
Input Power	Cooling/Heating	kW	2.21/2.26	2.63/2.68	2.96/3.10	4.29/3.84	3.77/3.68	2.84/2.87	3.89/3.88	
EER	Cooling	W/W	3.08	3.21	3.18	2.82	3.21	3.52	3.21	
	Heating		3.54	3.73	3.61	3.46	3.61	3.90	3.61	
Pdesign	Cooling/Heating(-10°C)	kW	6.8/6.0	8.5/8.0	9.4/8.7	-	-	10.0/10.0	-	
SEER	Cooling	W/W	6.20	5.90	5.70	-	-	5.80	-	
	Heating		4.00	3.90	3.80	-	-	4.00	-	
Energy Efficiency Class	Cooling	Class	A++	A+	A+	-	-	A+	-	
	Heating		A+	A	A	-	-	A+	-	
Max. Operating Current	Cooling/Heating	A	14.7/15.7	17.0/17.0	18.5/20.0	23.5/23.5	21.0/21.0	8.5/8.5	9.5/9.5	
Annual Energy Consumption	Cooling	kWh/a	384	504	576	-	-	603	-	
	Heating		2,099	2,868	3,202	-	-	3,497	-	
Moisture Removal		l/h	2.5	2.5	3.0	4.0	4.0	3.0	4.5	
Sound Pressure Level	Indoor (Cooling)	H/M/L/Q	31/29/27/25					38/36/31/26		42/38/32/28
	Indoor (Heating)	H/M/L/Q	31/29/27/25					40/36/31/26		48/38/32/28
	Outdoor (Cooling/Heating)	High	53/54	53/55	54/55	58/58	55/55	51/53	54/54	
Sound Power Level	Indoor (Cooling/Heating)	High	60/62	65/69	65/69	-	-	65/67	-	
	Outdoor (Cooling/Heating)	High	66/66	68/69	69/70	-	-	67/69	-	
Airflow Rate	Indoor / Outdoor (Cooling)	High	1,100/2,850	1,900/3,600	1,900/3,800	2,100/4,650	2,100/6,750	1,800/6,200	2,100/6,750	
	Indoor / Outdoor (Heating)	High	1,100/2,700	2,100/3,600	2,100/3,800	2,100/4,650	2,100/6,200	1,850/6,200	2,100/6,200	
Static pressure range (Standard)		Pa	30 to 150 (35)	30 to 150 (47)	30 to 150 (47)	30 to 150 (60)	30 to 150 (60)	30 to 150 (47)	30 to 150 (60)	
Net Dimensions H x W x D	Indoor	mm	270x1,135x700	270x1,135x700	270x1,135x700	270x1,135x700	270x1,135x700	270x1,135x700	270x1,135x700	
Weight	Indoor	kg(lbs)	38 (84)	40 (88)	40 (88)	40 (88)	40 (88)	40 (88)	40 (88)	
	Outdoor	kg(lbs)	42 (93)	61 (134)	61 (134)	75 (165)	86 (190)	104 (229)	104 (229)	
Connection Pipe Diameter (Liquid / Gas)		mm	6.35/15.88	9.52/15.88	9.52/15.88	9.52/15.88	9.52/15.88	9.52/15.88	9.52/15.88	
Drain hose Diameter (I.D./O.D.)		mm	35.7/38.1	35.7/38.1	35.7/38.1	35.7/38.1	35.7/38.1	36.0/38.0	36.0/38.0	
Max Pipe Length (Pre-Charge)		m	30 (15)	50 (20)	50 (20)	50 (20)	50 (20)	75 (30)	75 (30)	
Max Height Difference			20	30	30	30	30	30	30	
Operation Range	Cooling	°CDB	-10 to 46	-15 to 46	-15 to 46	-15 to 46	-15 to 46	-15 to 46	-15 to 46	
	Heating		-15 to 24	-15 to 24	-15 to 24	-15 to 24	-15 to 24	-15 to 24	-15 to 24	
Refrigerant	Type (Global Warming Potential)		R410A (2,088)	R410A (2,088)	R410A (2,088)	R410A (2,088)	R410A (2,088)	R410A (2,088)	R410A (2,088)	
	Charge	kg(CO2eq-T)	1.50 (3.132)	2.10 (4.385)	2.10 (4.385)	2.90 (6.055)	3.35 (6.995)	3.45 (7.204)	3.45 (7.204)	

Optional parts

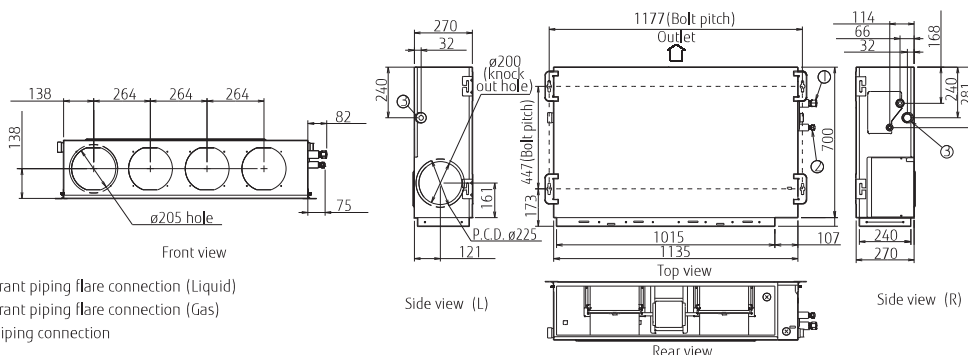
Wired Remote Controller: UTY-RNNYM
 Wired Remote Controller: UTY-RVNYM
 Simple Remote Controller: UTY-RSNYM
 External Switch Controller: UTY-TERX
 Wireless LAN Interface: UTY-TFNXZ1
 FJ-RC-WIFI-1
 Remote Sensor Unit: UTY-XSZX

Drain Pump Unit: UTD-PX1NBA
 External Connect Kit: UTD-ECCSA
 Long-Life Filter: UTD-LF25NA
 Flange (Round): UTD-RF204
 Flange (Square): UTD-SF045T
 MODBUS® Interface: FJ-RC-MBS-1
 KNX® Interface: FJ-RC-KNX-1i

Network Converter for single split (DC power supply type): UTY-VTGX
 Network Converter for single split (AC power supply type): UTY-VTGXV
 IR Receiver Unit: UTY-LRHYM
 (Outdoor unit 36/45/54) UTY-XWZXZ2
 External Connect Kit:

Dimensions

(Unit : mm)

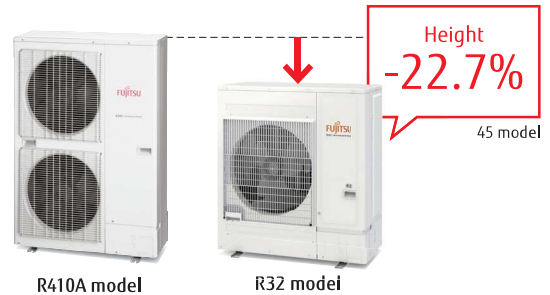
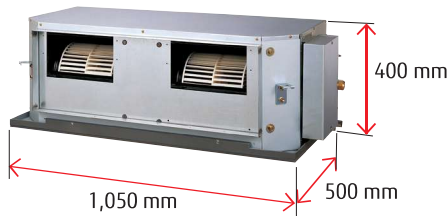


High Static Pressure Duct

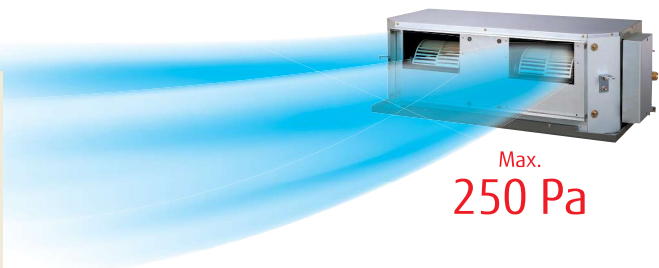
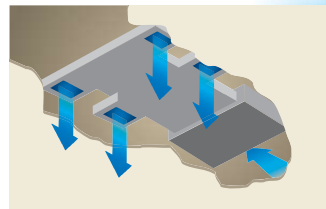


Easy installation (Compact size & Lightweight)

A compact size and lightweight indoor unit & outdoor unit has been developed by reducing the basic chassis and the overall material weight.

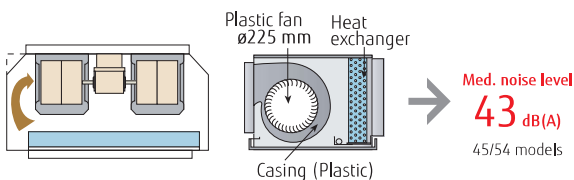


Design also corresponding to high static pressure

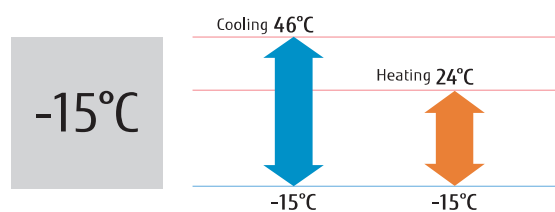


Low noise

Cutting off the corners has enabled less turbulent airflow. Low noise is realized by adopting a plastic case and a plastic fan.



Low ambient operation



Model : ARXG45KHTA / ARXG54KHTA
ARXG45KHTA [3 phase] / ARXG54KHTA [3 phase]



Specifications

Model No.	Indoor unit		ARXG45KHTA	ARXG54KHTA	ARXG45KHTA	ARXG54KHTA
	Outdoor unit		AOYG45KBTB	AOYG54KBTB	AOYG45KRTA	AOYG54KRTA
Power Source	Single phase, ~230V, 50Hz			3 phase, ~400V, 50Hz		
Capacity	Cooling	kW	12.1 (4.0-14.0)	13.4 (5.0-14.5)	12.1 (4.0-14.0)	13.4 (5.0-14.5)
	Heating		13.5 (5.0-16.2)	15.5 (5.5-18.0)	13.5 (5.0-16.2)	15.5 (5.5-18.0)
Input Power	Cooling/Heating		4.16/3.61	4.77/4.18	4.16/3.61	4.77/4.18
	Cooling	W/W	2.91	2.81	2.91	2.81
COP	Heating		3.74	3.71	3.74	3.71
Pdesign	Cooling/Heating(-10°C)		-	-	-	-
SEER	Cooling		-	-	-	-
SCOP	Heating		-	-	-	-
	Cooling		-	-	-	-
Energy Efficiency Class	Heating		-	-	-	-
	Cooling		-	-	-	-
Max. Operating Current	Cooling/Heating		28.5/28.5	28.5/28.5	14.0/14.0	14.0/14.0
Annual Energy Consumption	Cooling		-	-	-	-
	Heating		-	-	-	-
Moisture Removal			1.5	2.0	1.5	2.0
Sound Pressure Level	Indoor (Cooling)	H/M/L	47/43/40	47/43/40	47/43/40	47/43/40
	Indoor (Heating)	H/M/L	47/43/40	47/43/40	47/43/40	47/43/40
	Outdoor(Cooling/Heating)	High	57/57	57/59	57/57	57/59
Sound Power Level	Indoor(Cooling/Heating)	High	75/74	75/74	75/74	75/74
	Outdoor(Cooling/Heating)	High	71/71	73/73	71/71	73/73
Airflow Rate	Indoor / Outdoor (Cooling)	High	3,350/4,450	3,350/4,450	3,350/4,450	3,350/4,450
	Indoor / Outdoor (Heating)	High	3,350/4,450	3,350/4,450	3,350/4,450	3,350/4,450
Static pressure range (Standard)			100 to 250 (100)	100 to 250 (100)	100to250 (100)	100to250 (100)
Net Dimensions H x W x D	Indoor	mm	400x1,050x500	400x1,050x500	400x1,050x500	400x1,050x500
	Outdoor	mm	998x940x320	998x940x320	998x940x320	998x940x320
Weight	Indoor	kg(lbs)	46 (101)	46 (101)	46 (101)	46 (101)
	Outdoor	kg(lbs)	67 (148)	67 (148)	67 (148)	67 (148)
Connection Pipe Diameter (Liquid / Gas)			9.52/15.88	9.52/15.88	9.52/15.88	9.52/15.88
Drain hose Diameter (I.D./O.D.)			23.4/25.4	23.4/25.4	23.4/25.4	23.4/25.4
Max Pipe Length (Pre-Charge)			50 (30)	50 (30)	50 (30)	50 (30)
Max Height Difference			30	30	30	30
Operation Range	Cooling		-15 to 46	-15 to 46	-15 to 46	-15 to 46
	Heating		-15 to 24	-15 to 24	-15 to 24	-15 to 24
Refrigerant	Type (Global Warming Potential)		R32 (675)	R32 (675)	R32 (675)	R32 (675)
	Charge		kg(CO2eq-T)	2.70(1.823)	2.70(1.823)	2.70(1.823)

Optional parts

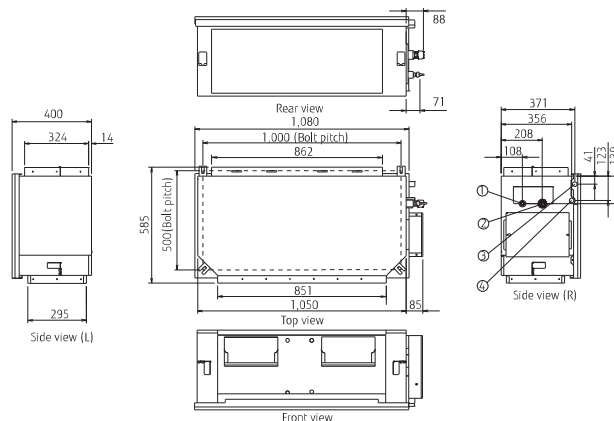
Wired Remote Controller: UTY-RNNYM
 UTY-RVNYM
 Simple Remote Controller: UTY-RSNYM
 Wireless LAN Interface: UTY-TFNXZ1
 FJ-RC-WIFI-1

External Connect Kit: UTD-ECSSA
 Remote Sensor Unit: UTY-XSZX
 Long-Life Filter: UTD-LF60KA
 MODBUS® Interface: FJ-RC-MBS-1
 KNX® Interface: FJ-RC-KNX-1i

Network Converter for single split (DC power supply type): UTY-VTGX
 Network Converter for single split (AC power supply type): UTY-VTGXV
 External Switch Controller: UTY-TERX
 (Outdoor unit 45/54) UTY-XWZXZ3
 External Connect Kit:

Dimensions

(Unit : mm)



- ① Refrigerant piping flare connection (Liquid)
- ② Refrigerant piping flare connection (Gas)
- ③ Drain piping connection (Safety drain pan)
- ④ Drain piping connection (Main drain pan)

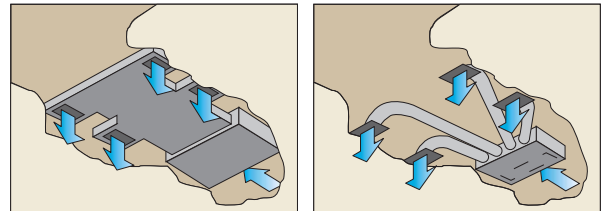
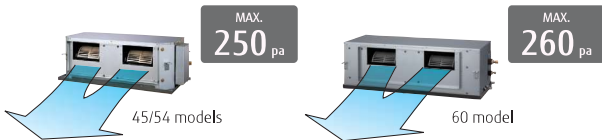
High Static Pressure Duct



High energy efficiency

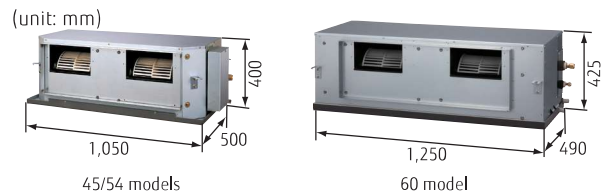
Significantly greater efficiency is realized by using all DC inverter technology. (60 model)

Design also corresponding to high static pressure



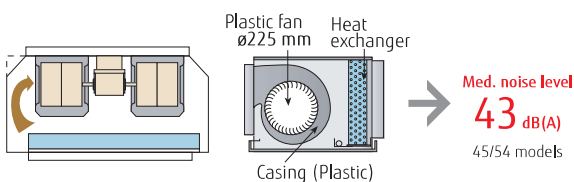
Easy installation (Compact size & Lightweight)

A compact size and lightweight indoor unit has been developed by reducing the basic chassis and the overall material weight.

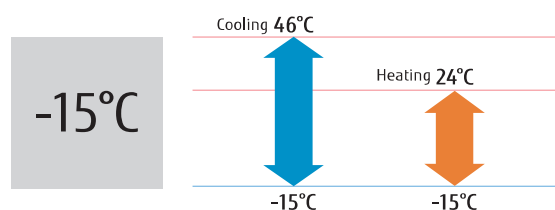


Low noise

Cutting off the corners has enabled less turbulent airflow. Low noise is realized by adopting a plastic case and a plastic fan.



Low ambient operation



**Model : ARYG45LHTA / ARYG54LHTA /
ARYG45LHTA [3 phase] / ARYG54LHTA [3 phase] / ARYG60LHTA [3 phase]**



Wired R.C.



ARYG45/54LHTA



ARYG60LHTA



Specifications

Model No.	Indoor unit		ARYG45LHTA	ARYG54LHTA	ARYG45LHTA	ARYG54LHTA	ARYG60LHTA
	Outdoor unit		AOYG45LETL	AOYG54LETL	AOYG45LATT	AOYG54LATT	AOYG60LATT
Power Source			Single phase, ~230V, 50Hz		3 phase, ~400V, 50Hz		
Capacity	Cooling	kW	12.5 (4.5-14.0)	13.4 (5.0-14.5)	12.5 (5.0-14.0)	14.0 (5.4-16.0)	15.0 (6.2-17.5)
	Heating		14.0 (5.0-16.2)	16.0 (5.5-18.0)	14.0 (5.4-16.2)	16.0 (5.8-18.0)	18.0 (6.2-20.0)
Input Power	Cooling/Heating	kW	4.30/3.80	4.77/4.69	4.06/3.67	4.65/4.37	4.70/5.15
EER	Cooling	W/W	2.91	2.81	3.08	3.01	3.19
COP	Heating		3.68	3.41	3.81	3.66	3.50
Max. Operating Current	Cooling/Heating	A	22.5/22.5	23.5/23.5	11.0/11.0	12.0/12.0	12.5/12.5
Moisture Removal		l/h	1.5	2.0	1.5	2.5	2.0
Sound Pressure	Indoor (Cooling)	H/M/L/Q	47/43/40/-	47/43/40/-	47/43/40/-	47/43/40/-	45/40/36/-
	Indoor (Heating)	H/M/L/Q	47/43/40/-	47/43/40/-	47/43/40/-	47/43/40/-	45/40/36/-
	Outdoor (Cooling/Heating)	High	55/55	55/57	54/54	55/56	56/58
Airflow Rate	Indoor / Outdoor (Cooling)	High	3,350/6,750	3,350/6,750	3,350/6,750	3,350/6,900	3,550/6,900
	Indoor / Outdoor (Heating)	High	3,350/6,200	3,350/6,850	3,350/6,200	3,350/6,900	3,550/7,300
Static pressure range (Standard)		Pa	100 to 250 (100)	100 to 250 (100)	100 to 250 (100)	100 to 250 (100)	60 to 260 (60)
Net Dimensions	Indoor	mm	400×1,050×500	400×1,050×500	400×1,050×500	400×1,050×500	425×1,250×490
H x W x D	Outdoor	mm	1,290×900×330	1,290×900×330	1,290×900×330	1,290×900×330	1,290×900×330
	Weight	kg(lbs)	46 (101)	46 (101)	46 (101)	46 (101)	54 (119)
Connection Pipe Diameter (Liquid / Gas)	Indoor	kg(lbs)	86 (190)	86 (190)	104 (229)	104 (229)	104 (229)
	Outdoor	kg(lbs)	46 (101)	46 (101)	46 (101)	46 (101)	54 (119)
Drain hose Diameter (I.D./O.D.)		mm	9.52/15.88	9.52/15.88	9.52/15.88	9.52/15.88	9.52/15.88
Max Pipe Length (Pre-Charge)		m	23.4/25.4	23.4/25.4	23.4/25.4	23.4/25.4	23.4/25.4
Max Height Difference		m	50 (20)	50 (20)	75 (30)	75 (30)	75 (30)
Operation Range	Cooling	°CDB	30	30	30	30	30
	Heating	°CDB	-15 to 46	-15 to 46	-15 to 46	-15 to 46	-15 to 46
Refrigerant	Type (Global Warming Potential)		-15 to 24	-15 to 24	-15 to 24	-15 to 24	-15 to 24
	Charge	kg(CO2eq-T)	R410A (2,088)	R410A (2,088)	R410A (2,088)	R410A (2,088)	R410A (2,088)
			3.35 (6.995)	3.35 (6.995)	3.45 (7.204)	3.45 (7.204)	3.45 (7.204)

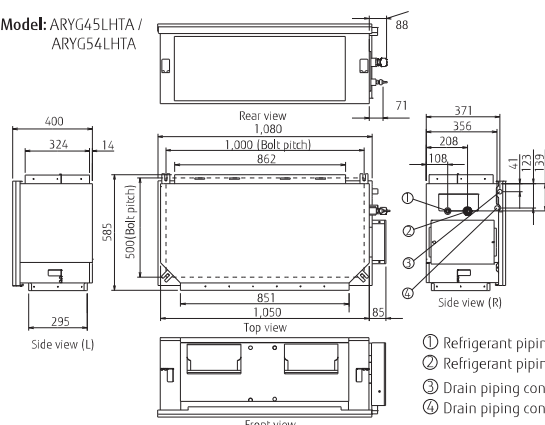
Optional parts

- | | |
|--------------------------------------|--|
| Wired Remote Controller: UTY-RNNYM | Network Converter for single split (DC power supply type): UTY-VTGX |
| Wired Remote Controller: UTY-RVNYM | Network Converter for single split (AC power supply type): UTY-VTGVX |
| Simple Remote Controller: UTY-RSNYM | External Connect Kit: UTD-ECSSA |
| External Switch Controller: UTY-TERX | IR Receiver Unit: UTY-LRHYM (60) |
| Wireless LAN Interface: UTY-TFNXZ1 | Long-Life Filter: UTD-LF60KA (45/54) |
| FJ-RC-WIFI-1 | |
| Remote Sensor Unit: UTY-XSZX | (Outdoor unit AOYG45/54/60LATT) |
| MODBUS® Interface: FJ-RC-MBS-1 | External Connect Kit: UTY-XWZXZ2 |
| KNX® Interface: FJ-RC-KNX-1 | |

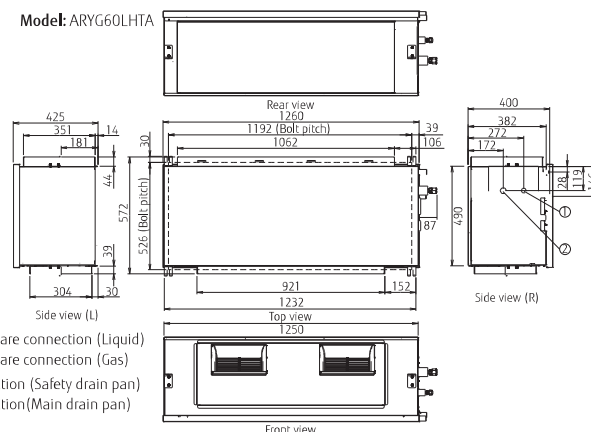
Dimensions

(Unit : mm)

Model: ARYG45LHTA / ARYG54LHTA



Model: ARYG60LHTA



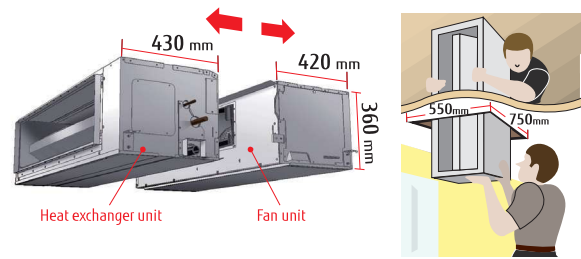
- ① Refrigerant piping flare connection (Liquid)
- ② Refrigerant piping flare connection (Gas)
- ③ Drain piping connection (Safety drain pan)
- ④ Drain piping connection (Main drain pan)

Big Duct



Separation is possible by lightweight compact design

The indoor unit can be separated into fan unit and heat-exchanger unit to assist the installation works.



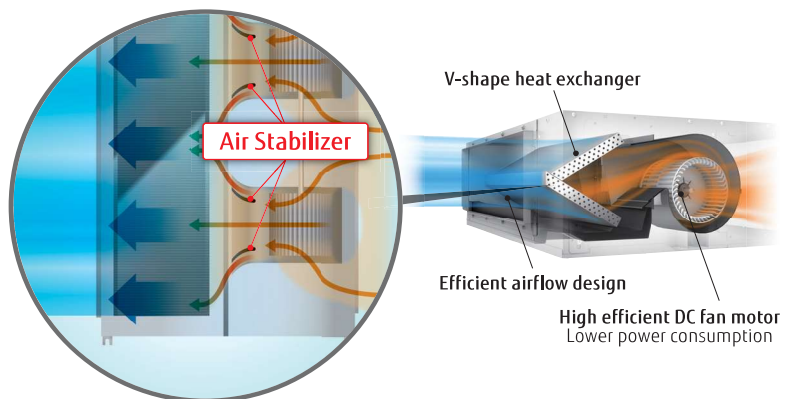
Automatic Airflow adjustment function

This function can set the optimum airflow automatically so, that installation time is shortened drastically.



Quiet operation

The combination of the V-shaped heat exchanger, air stabilizer, and the high efficient DC fan motor allowed quiet operation despite of the small structural design.



Model : ARYG72LHTA / ARYG90LHTA



Wired R.C.



Specifications

Model No.	Indoor unit		ARYG72LHTA	ARYG90LHTA
	Outdoor unit		AOYG72LRLA	AOYG90LRLA
Power Source	Indoor		Single phase, ~230V, 50Hz	
	Outdoor		3 phase, ~400V, 50Hz	
Capacity	Cooling	kW	19.0 (8.4-20.9)	22.0 (10.3-24.2)
	Heating		22.4 (7.2-24.6)	27.0 (8.5-29.7)
Input Power	Cooling/Heating	kW	6.46 / 6.59	7.77 / 8.18
EER	Cooling	W/W	2.94	2.83
COP	Heating		3.40	3.30
Max. Operating Current	Indoor(Cooling/Heating)		-	-
	Outdoor(Cooling/Heating)		-	-
Moisture Removal		l/h	4.5	6.0
Sound Pressure	Indoor (Cooling)	H/M/L/Q	46/43/41/39	47/44/42/40
	Indoor (Heating)	H/M/L/Q	46/43/41/39	47/44/42/40
	Outdoor(Cooling/Heating)	High	55/55	55/57
Airflow Rate	Indoor / Outdoor (Cooling)	High	4,300/8,400	4,300/8,400
	Indoor / Outdoor (Heating)	High	4,300/8,400	4,300/9,000
Static pressure range (Standard)		Pa	50 to 150 (72)	50 to 200 (72)
Net Dimensions H x W x D	Indoor	mm	360×1,400×850	360×1,400×850
	Outdoor	mm	1,428×1,080×480	1,428×1,080×480
Weight	Indoor	kg(lbs)	69 (152)	80 (176)
	Outdoor	kg(lbs)	165 (364)	174 (384)
Connection Pipe Diameter (Liquid / Gas)		mm	12.7/25.4	12.7/25.4
Drain Hose Diameter (I.D./O.D.)			25/32	25/32
Max Pipe Length (Pre-Charge)		m	100 (30)	100 (30)
Height Difference			30	30
Operation Range	Cooling	°CDB	-15 to 46	-15 to 46
	Heating		-20 to 24	-20 to 24
Refrigerant	Type (Global Warming Potential)		R410A (2,088)	R410A (2,088)
	Charge	kg(CO2eq-T)	5.6 (11.693)	7.1 (14.825)

Optional parts

Compact Wired Remote Controller:	UTY-RCRYZ1	External Switch Controller:	UTY-TERX	Network Converter for single split (DC power supply type):	UTY-VTGX
Wired Remote Controller (Touch Panel):	UTY-RNRYZ3	Wireless LAN Interface:	UTY-TFSXZ1	Network Converter for single split (AC power supply type):	UTY-VTGXV
Wired Remote Controller:	UTY-RLRY		FJ-RC-WIFI-1	IR Receiver Unit:	UTY-LBTYM
	UTY-RNNYM	KNX® Converter:	UTY-VKSX		UTY-LRHYM
	UTY-RVNYM	MODBUS® Converter:	UTY-VMSX		
Simple Remote Controller (Without operation mode):	UTY-RHRY	External input and output PCB:	UTY-XCSX	(Outdoor unit 72/90)	
Simple Remote Controller:	UTY-RSRY	Remote Sensor Unit:	UTY-XSXZ	External Connect Kit:	UTY-XWZXZ3
	UTY-RSNYM	MODBUS® Interface:	FJ-RC-MBS-1		
External Connect Kit:	UTY-XWZXZG	KNX® Interface:	FJ-RC-KNX-li		
Drain Pump Unit:	UTZ-PX1NAB	Long Life Filter	UTD-LFKA		

Dimensions

(Unit : mm)

