

SPLIT

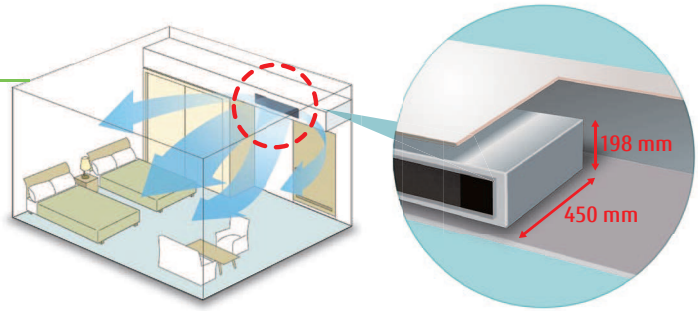
Mini Duct

Built-in Drain Pump



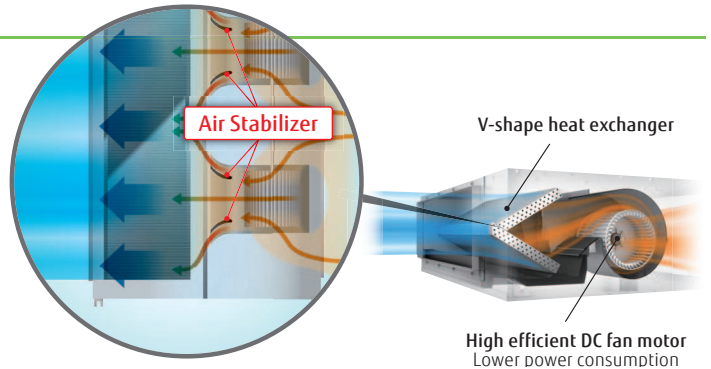
Large living space available

- Installation space can be reduced down to minimum depth 450 mm height 198 mm and compact design
- Minimum size: Depth 450 mm, Height 198 mm Volume 27% down compared with current model
- Lightweight: 15.5 kg 18% down (12/14 models)



Optimum airflow path and low noise operation

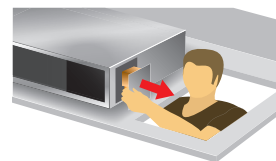
Low noise is realized drastically by stabilized airflow design



Easy design and maintenance for drain

By using the DC fan motor, it is possible to change the static pressure range from 0 to 50 Pa*. The change of static pressure range is possible by remote controller.
*12 model: 0 to 30 Pa.

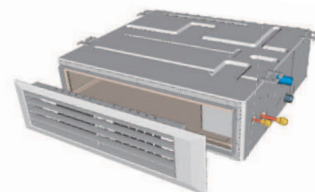
Built-in drain pump as standard: Maintenance is easy



Parts can be replaced from the side of the body where maintenance is easier

Auto Louver Grille Kit (Option)

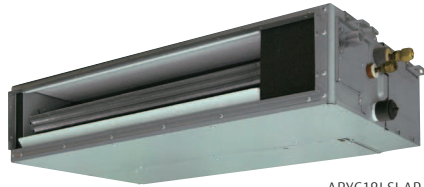
- Thin design provides a comfortable living environment over a wide area.
- Automatic louver grille provides comfortable air conditioning all the way down to the floor and matches the interior design well. (Optional)



Model : ARYG12LSLAP / ARYG14LSLAP / ARYG18LSLAP



ARYG12/14LSLAP



ARYG18LSLAP



Wired R.C.



For ARYG12/14LSLAP



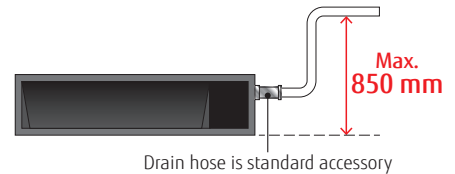
For ARYG18LSLAP

Specifications

Model No.	Indoor unit		ARYG12LSLAP	ARYG14LSLAP	ARYG18LSLAP
	Outdoor unit		AOYG12LALL	AOYG14LALL	AOYG18LBCB
Power Source			Single-phase, ~230V, 50Hz		
Capacity	Cooling	kW	3.5 (0.9-4.4)	4.3 (0.9-5.4)	5.2 (0.9-5.9)
	Heating		4.1 (0.9-5.7)	5.0 (0.9-6.5)	6.0 (0.9-7.5)
Input Power	Cooling/Heating		1.03/1.15	1.34/1.49	1.62/1.77
	Cooling	W/W	3.40	3.21	3.21
COP	Heating		3.56	3.35	3.38
	Pdesign	Cooling/Heating(-10°C)		3.5/4.2	4.3/4.5
SEER		Cooling	W/W	5.70	5.60
	Heating	3.90		3.80	3.80
Energy Efficiency Class	Cooling		A+	A+	A+
	Heating		A	A	A
Max. Operating Current	Cooling/Heating		A	7.5/10.0	9.0/12.5
	Cooling	kWh/a	215	269	314
Annual Energy Consumption	Heating		1,505	1,656	1,913
	Moisture Removal		l/h	1.2	1.4
Sound Pressure Level	Indoor (Cooling)	H/M/L/Q	dB(A)	31/27/25/23	
	Indoor (Heating)	H/M/L/Q		35/30/27/23	
	Outdoor (Cooling/Heating)	High		33/29/26/23	
Sound Power Level	Indoor (Cooling/Heating)	High	47/48	49/49	50/50
	Indoor (Cooling/Heating)	High	55/57	60/62	58/59
	Outdoor (Cooling/Heating)	High	61/63	62/64	62/65
Airflow Rate	Indoor / Outdoor (Cooling)		650/1,780	800/1,910	940/2,000
	Indoor / Outdoor (Heating)		650/1,630	800/1,740	940/1,910
Static pressure range (Standard)		Pa	0 to 30 (10)	0 to 50 (15)	0 to 50 (15)
Net Dimensions H x W x D	Indoor	mm	198×700×450	198×700×450	198×900×450
	Outdoor	mm	578×790×300	578×790×300	632×799×290
Weight	Indoor	kg(lbs)	15.5 (34)	15.5 (34)	18.5 (41)
	Outdoor	kg(lbs)	40 (88)	40 (88)	36 (79)
Connection Pipe Diameter (Liquid / Gas)		mm	6.35/9.52	6.35/12.70	6.35/12.70
Drain hose Diameter (I.D./O.D.)		mm	25/32	25/32	25/32
Max Pipe Length (Pre-Charge)		m	25 (15)	25 (15)	25 (15)
Max Height Difference			15	15	15
Operation Range	Cooling	°CDB	-10 to 46	-10 to 46	-10 to 46
	Heating		-15 to 24	-15 to 24	-15 to 24
Refrigerant	Type (Global Warming Potential)		R410A (2,088)	R410A (2,088)	R410A (2,088)
	Charge		kg(CO2eq-T)	1.15 (2.4)	1.25 (2.6)

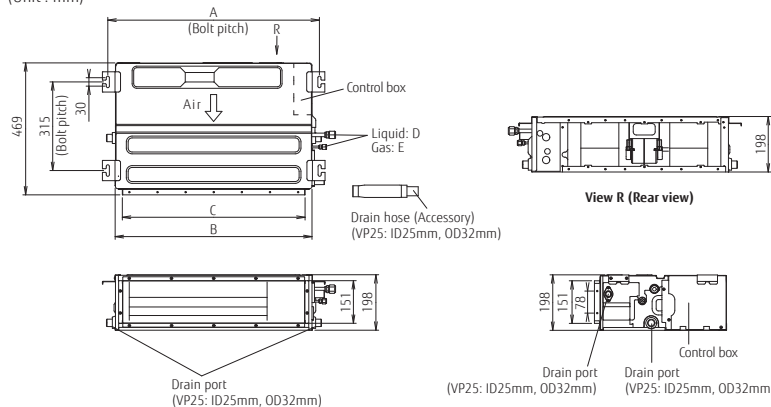
Optional parts

- Wired Remote Controller: UTY-RLRY, UTY-RNRYZ3, UTY-RVNYM, Auto Louver Grille Kit: UTD-GXTA-W (ARYG12/14LSLAP)
 UTY-RNNYM UTD-GXTB-W (ARYG18LSLAP)
 Simple Remote Controller: UTY-RSNYM, UTY-RSRY, UTY-RHRY External connect kit: UTY-XWZXG
 IR Receiver Kit: UTY-LBTYM Wireless LAN Interface: UTY-TFNXZ1
 Remote Sensor Unit: UTY-XSZX



Dimensions

(Unit : mm)



	ARYG12/14LSLAP	ARYG18LSLAP
A	752	952
B	700	900
C	650	850
D	6.35	9.52
E	12.70	15.88